

## Product datasheet for PH313425

### Carbonic anhydrase X (CA10) (NM\_020178) Human Mass Spec Standard

#### Product data:

Product Type:	Mass Spec Standards
Description:	CA10 MS Standard C13 and N15-labeled recombinant protein (NP_064563)
Species:	Human
Expression Host:	HEK293
Expression cDNA Clone or AA Sequence:	RC213425
Predicted MW:	37.6 kDa
Protein Sequence:	>RC213425 protein sequence Red=Cloning site Green=Tags(s)
	MEIVWEVLFLLQANFIVCISAQQNSPKIHEGWWAYKEVVQGSFVVPFSWGLVNSAWNLCSVGKRQSPVN IETSHMIFDPFLTPLRINTGGRKVSGTMYNTGRHVSLRLDKEHLVNISSGPMYSHRLEEIRLHFGSEDS QGSEHLLNQAFSGEVQLIHYNHELTYTNVTEAAKSPNGLVVVSIFIKVSDSSNPFLNRMLNRDTITRITY KNDAYLLQGLNIEELYPETSSFITYDGSMTIPPCYETASWIIMNKPVYITRMQMHSRLRLSQNQPSQIFL SMSDNFRPVQPLNNRCIRTNINFSLQKDCPNRAQKLQYRVNEWLLK
	TRTRPLEQKLISEEDLAANDILDYKDDDDKV
Tag:	C-Myc/DDK
Purity:	> 80% as determined by SDS-PAGE and Coomassie blue staining
Concentration:	>0.05 µg/µL as determined by microplate BCA method
Labeling Method:	Labeled with [U- <sup>13</sup> C <sub>6</sub> , <sup>15</sup> N <sub>4</sub> ]-L-Arginine and [U- <sup>13</sup> C <sub>6</sub> , <sup>15</sup> N <sub>2</sub> ]-L-Lysine
Buffer:	25 mM Tris-HCl, 100 mM glycine, pH 7.3
Storage:	Store at -80°C. Avoid repeated freeze-thaw cycles.
Stability:	Stable for 3 months from receipt of products under proper storage and handling conditions.
RefSeq:	<a href="#">NP_064563</a>
RefSeq Size:	3260
RefSeq ORF:	984
Synonyms:	CA-RPX; CARPX; HUCEP-15
Locus ID:	56934



[View online »](#)

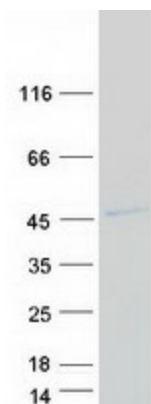
UniProt ID: [Q9NS85](#), [A0A384MTY8](#)

Cytogenetics: 17q21.33-q22

**Summary:** This gene encodes a protein that belongs to the carbonic anhydrase family of zinc metalloenzymes, which catalyze the reversible hydration of carbon dioxide in various biological processes. The protein encoded by this gene is an acatalytic member of the alpha-carbonic anhydrase subgroup, and it is thought to play a role in the central nervous system, especially in brain development. Multiple transcript variants encoding the same protein have been found for this gene. [provided by RefSeq, Jul 2008]

Protein Families: Druggable Genome

### Product images:



Coomassie blue staining of purified CA10 protein (Cat# [TP313425]). The protein was produced from HEK293T cells transfected with CA10 cDNA clone (Cat# [RC213425]) using MegaTran 2.0 (Cat# [TT210002]).