

Product datasheet for PH313422

Entactin (NID1) (NM_002508) Human Mass Spec Standard

Product data:

Product Type:	Mass Spec Standards
Description:	NID1 MS Standard C13 and N15-labeled recombinant protein (NP_002499)
Species:	Human
Expression Host:	HEK293
Expression cDNA Clone or AA Sequence:	RC213422
Predicted MW:	136.4 kDa
Protein Sequence:	>RC213422 representing NM_002508 Red=Cloning site Green=Tags(s)

MLASSSRIRAAWTRALLPLLLAGPVGCLSRQELFPFGPGQGDLELEDGDDFVSPAELSGALRFYDRSD
IDAVVYVTNGI IATSEPPAKESHPLFPPTFGAVAPFLADLDTTDLGKVVYREDLSPSITQRAAECVHR
GFPEISFQSSAVVVTWESVAPYQGPSRDPDQKGRNTFQAVLASSDSSSYAIFLYPEDGLQFHHTFSKK
ENNQVPAYVAFSQGSVGF LWKSN GAYNIFANDRESIENLAKSSNSGQQGVWVFEIGSPATTNGVVPADVI
LGTEDGAEYDDEDYDLATTRLGLEDVGTTPFSYKALRRGGADTYSVPSVLSPPRAATERPLGPPTERT
RSFQLAVETFHQHPQVIDVDEVEETGVVFSYNTDSRQTCANNRHQCSVHAECRDYATGCCSCVAGYTG
NGRQCVAEGSPQRVNGKVKGRIFVGS SQVPIVFENTDLHSYVVMNHGRSYTAISTIPETVGSLLPLAPV
GGIIGWMAVEQDGFKNFSITGGEFTRQAEVTFVGHGPNLVIKQRFSGIDEHGHLTIDTELEGRVPQIP
FGSSVHIIEPYTELYHYSTSVITSSSTREYTVTEPERDGASPSRIYTYQWRQTITFQECVHDDSRPALPST
QQLSVDSVFVLYNQEEKILRYALSNSIGPVREGSPDALQNPCYIGTHGCDTNAACRPGPRTQFTCECSIG
FRGDGRTCYDIDECSEQPSVCGSHTICNNHPGTFRCECEVEGYQFSDEGTCVAVVDQRPINYCETGLHNCD
IPQRAQC IYTGSSYTC SCLPGFSGDGGACQD VDECHPSRCHPDAFCYNTPGSFTCQCKPGYQDGFRCV
PGEVEKTRCQHEREHILGAAGATDPQRP IPPGLFVPECD AHGHYAPTQCHGSTGYCWCVDRD GREVEGTR
TRPGMTPPCLSTVAPPIHQGPAVPTAVIPLPPGTHLLFAQTGKIERLPLEGNTMRKTEAKAFLHVPKVI
IGLAFDCVDMVYWTDI TEPSIGRASLHGGEPTTII RQDLGSPEGIAVDHLGRNIFWTD SNLDRIEVAKL
DGTQRRVLFETDLVNPRGIVTDSVRGNLYWTDWNRDNPKIETS YMDGTNRRILVQDDLGLPNGLTFDAFS
SQLCWVDAGTNRAECLNPSQPSRRKALEGLQYPFAVTSYGKNLYFTDWKMNSVVALDLAISKETDAFQPH
KQTRLYGIT TALSQCPQGHNYCSVNNGGCTHLCLATPGSRTCRCPDNTLGVDCIEQK

TRTRPLEQKLISEEDLAANDILDYKDDDDKV

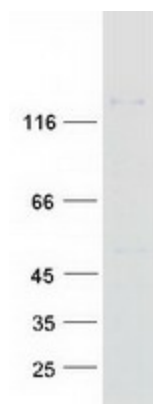
Tag:	C-Myc/DDK
Purity:	> 80% as determined by SDS-PAGE and Coomassie blue staining
Concentration:	>0.05 µg/µL as determined by microplate BCA method
Labeling Method:	Labeled with [U- ¹³ C ₆ , ¹⁵ N ₄]-L-Arginine and [U- ¹³ C ₆ , ¹⁵ N ₂]-L-Lysine



[View online »](#)

Buffer:	25 mM Tris-HCl, 100 mM glycine, pH 7.3
Storage:	Store at -80°C. Avoid repeated freeze-thaw cycles.
Stability:	Stable for 3 months from receipt of products under proper storage and handling conditions.
RefSeq:	NP_002499
RefSeq Size:	4898
RefSeq ORF:	3741
Synonyms:	NID
Locus ID:	4811
UniProt ID:	P14543
Cytogenetics:	1q42.3
Summary:	This gene encodes a member of the nidogen family of basement membrane glycoproteins. The protein interacts with several other components of basement membranes, and may play a role in cell interactions with the extracellular matrix. [provided by RefSeq, Jul 2008]
Protein Families:	Druggable Genome, Secreted Protein

Product images:



Coomassie blue staining of purified NID1 protein (Cat# [TP313422]). The protein was produced from HEK293T cells transfected with NID1 cDNA clone (Cat# [RC213422]) using MegaTran 2.0 (Cat# [TT210002]).