

Product datasheet for PH313353

VCAM1 (NM_080682) Human Mass Spec Standard

Product data:

| | |
|---------------------------------------|---|
| Product Type: | Mass Spec Standards |
| Description: | VCAM1 MS Standard C13 and N15-labeled recombinant protein (NP_542413) |
| Species: | Human |
| Expression Host: | HEK293 |
| Expression cDNA Clone or AA Sequence: | RC213353 |
| Predicted MW: | 71.3 kDa |
| Protein Sequence: | >RC213353 representing NM_080682 Red=Cloning site Green=Tags(s) |

MPGKMOVILGASNILWIMFAASQAFKIETTPESRYLAQIGDSVSLTCSTTGCEPFFSWRTQIDSPLNGK
VTNEGTTSTLTMNPVSFGNEHSYLCTATCESRKLEKGIQVEIYSFPKDPEIHLSGPLEAGKPITVKCSVA
DVYPFDRLEIDLLKGDHLMKSQEFLEDADRKSLETKSLEVTFPTVIEDIGKVLVCRAKLHIDEMDSVPTV
RQAVKELQVYISPKNTVISVNPSTKLQEGGSVTMTCSSEGLPAPEIFWSKKLDNGNLQHL SGNATLTLIA
MRMEDSGIYVCEGVNLIGKNRKEVELIVQAFPRDPEIEMSGGLVNGSSVTVSCKVPSVYPLDRLEIELLK
GETILENIEFLEDTDMKSLENKSLEMTFIPTIEDTGKALVCQAKLHIDDMEFEPKQRQSTQTL YVNVAPR
DTTVLVSPSSILEEGSSVNMTCLSQGFPAKILWSRQLPNGELQPLSENATLTLISTKMEDSGVYLCEGI
NQAGRSRKEVELIIQVTPKDIKLTAFPSESVKEGDTVIIISCTCGNVPETWIIILKKAETGDTVLSIDGA
YTIRKAQLKDAGVYECESKNKVGSQLRSLTLDVQGRENNKDYFSPELLVLYFASLIIPAI GMIIYFARK
ANMKGSYSLVEAQKSKV

TRTRPLEQKLI SEEDLAANDILDYKDDDDKV

| | |
|------------------|--|
| Tag: | C-Myc/DDK |
| Purity: | > 80% as determined by SDS-PAGE and Coomassie blue staining |
| Concentration: | >0.05 µg/µL as determined by microplate BCA method |
| Labeling Method: | Labeled with [U- 13C6, 15N4]-L-Arginine and [U- 13C6, 15N2]-L-Lysine |
| Buffer: | 25 mM Tris-HCl, 100 mM glycine, pH 7.3 |
| Storage: | Store at -80°C. Avoid repeated freeze-thaw cycles. |
| Stability: | Stable for 3 months from receipt of products under proper storage and handling conditions. |
| RefSeq: | NP_542413 |
| RefSeq Size: | 2944 |



[View online »](#)

RefSeq ORF: 1941

Synonyms: CD106; INCAM-100

Locus ID: 7412

UniProt ID: [P19320](#)

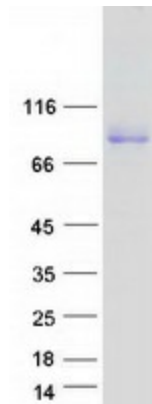
Cytogenetics: 1p21.2

Summary: This gene is a member of the Ig superfamily and encodes a cell surface sialoglycoprotein expressed by cytokine-activated endothelium. This type I membrane protein mediates leukocyte-endothelial cell adhesion and signal transduction, and may play a role in the development of atherosclerosis and rheumatoid arthritis. Three alternatively spliced transcripts encoding different isoforms have been described for this gene. [provided by RefSeq, Dec 2010]

Protein Families: Druggable Genome, ES Cell Differentiation/IPS, Transmembrane

Protein Pathways: Cell adhesion molecules (CAMs), Leukocyte transendothelial migration

Product images:



Coomassie blue staining of purified VCAM1 protein (Cat# [TP313353]). The protein was produced from HEK293T cells transfected with VCAM1 cDNA clone (Cat# [RC213353]) using MegaTran 2.0 (Cat# [TT210002]).