

Product datasheet for PH313338

GATD1 (NM_182612) Human Mass Spec Standard

Product data:

Product Type:	Mass Spec Standards
Description:	PDDC1 MS Standard C13 and N15-labeled recombinant protein (NP_872418)
Species:	Human
Expression Host:	HEK293
Expression cDNA Clone or AA Sequence:	RC213338
Predicted MW:	23.1 kDa
Protein Sequence:	>RC213338 representing NM_182612 Red=Cloning site Green=Tags(s) MASERLPNRPACLLVASGAAEGVSAQSFLHCFTMASTAFNLQVATPGGKAMEFVDVTESNARWVQDFRLK AYASPAKLESIDGARYHALLIPSCPGALTDLASSGSLARILQHFHSESKPICAVGHGVAALCCATNEDRS WVFDSYSLTGPSVCELVRAPGFARLPLVVEDFVKDSGACFSASEPDAVHVVLDRHLVTGQNASSTVPAVQ NLLFLCGSRK TRTRPLEQKLI SEEDLAANDILDYKDDDDKV
Tag:	C-Myc/DDK
Purity:	> 80% as determined by SDS-PAGE and Coomassie blue staining
Concentration:	>0.05 µg/µL as determined by microplate BCA method
Labeling Method:	Labeled with [U- ¹³ C ₆ , ¹⁵ N ₄]-L-Arginine and [U- ¹³ C ₆ , ¹⁵ N ₂]-L-Lysine
Buffer:	25 mM Tris-HCl, 100 mM glycine, pH 7.3
Storage:	Store at -80°C. Avoid repeated freeze-thaw cycles.
Stability:	Stable for 3 months from receipt of products under proper storage and handling conditions.
RefSeq:	NP_872418
RefSeq Size:	2598
RefSeq ORF:	660
Synonyms:	PDDC1
Locus ID:	347862
UniProt ID:	Q8NB37 , B7Z1J9

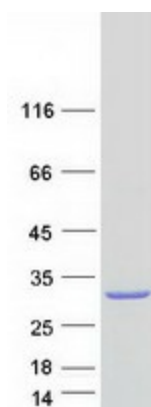


[View online »](#)

Cytogenetics: 11p15.5

Protein Families: Protease

Product images:



Coomassie blue staining of purified GATD1 protein (Cat# [TP313338]). The protein was produced from HEK293T cells transfected with GATD1 cDNA clone (Cat# [RC213338]) using MegaTran 2.0 (Cat# [TT210002]).