

## Product datasheet for PH313323

### LOX (NM\_002317) Human Mass Spec Standard

#### Product data:

Product Type:	Mass Spec Standards
Description:	LOX MS Standard C13 and N15-labeled recombinant protein (NP_002308)
Species:	Human
Expression Host:	HEK293
Expression cDNA Clone or AA Sequence:	RC213323
Predicted MW:	46.8 kDa
Protein Sequence:	>RC213323 representing NM_002317 Red=Cloning site Green=Tags(s)
	MRF AWT V L L L G P L Q L C A L V H C A P P A A G Q Q P P R E P P A A P G A W R Q Q I Q W E N N G Q V F S L L S L G S Q Y Q P Q R R R D P G A A V P G A A N A S A Q Q P R T P I L L I R D N R T A A A R T R T A G S S G V T A G R P R P T A R H W F Q A G Y S T S R A R E A G A S R A E N Q T A P G E V P A L S N L R P P S R V D G M V G D D P Y N P Y K Y S D D N P Y Y N Y D T Y E R P R P G G R Y R P G Y G T G Y F Q Y G L P D L V A D P Y Y I Q A S T Y V Q K M S M Y N L R C A A E N C L A S T A Y R A D V R D Y D H R V L L R F P Q R V K N Q G T S D F L P S R P R Y S W E W H S C H Q H Y H S M D E F S H Y D L L D A N T Q R R V A E G H K A S F C L E D T S C D Y G Y H R R F A C T A H T Q G L S P G C Y D T Y G A D I D C Q W I D I T D V K P G N Y I L K V S V N P S Y L V P E S D Y T N N V R C D I R Y T G H H A Y A S G C T I S P Y
	TRTRPLEQKLI SEEDLAANDILDYKDDDDKV
Tag:	C-Myc/DDK
Purity:	> 80% as determined by SDS-PAGE and Coomassie blue staining
Concentration:	>0.05 µg/µL as determined by microplate BCA method
Labeling Method:	Labeled with [U- <sup>13</sup> C <sub>6</sub> , <sup>15</sup> N <sub>4</sub> ]-L-Arginine and [U- <sup>13</sup> C <sub>6</sub> , <sup>15</sup> N <sub>2</sub> ]-L-Lysine
Buffer:	25 mM Tris-HCl, 100 mM glycine, pH 7.3
Storage:	Store at -80°C. Avoid repeated freeze-thaw cycles.
Stability:	Stable for 3 months from receipt of products under proper storage and handling conditions.
RefSeq:	<u><a href="#">NP_002308</a></u>
RefSeq Size:	1946
RefSeq ORF:	1251
Synonyms:	AAT10
Locus ID:	4015



[View online »](#)

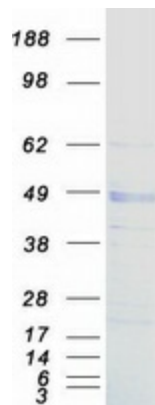
UniProt ID: [P28300](#), [D0PNI2](#)

Cytogenetics: 5q23.1

**Summary:** This gene encodes a member of the lysyl oxidase family of proteins. Alternative splicing results in multiple transcript variants, at least one of which encodes a preproprotein that is proteolytically processed to generate a regulatory propeptide and the mature enzyme. The copper-dependent amine oxidase activity of this enzyme functions in the crosslinking of collagens and elastin, while the propeptide may play a role in tumor suppression. In addition, defects in this gene have been linked with predisposition to thoracic aortic aneurysms and dissections. [provided by RefSeq, Jul 2016]

**Protein Families:** Druggable Genome, Secreted Protein

### Product images:



Coomassie blue staining of purified LOX protein (Cat# [TP313323]). The protein was produced from HEK293T cells transfected with LOX cDNA clone (Cat# [RC213323]) using MegaTran 2.0 (Cat# [TT210002]).