

Product datasheet for PH313276

PRRX1 (NM_006902) Human Mass Spec Standard

Product data:

Product Type:	Mass Spec Standards
Description:	PRRX1 MS Standard C13 and N15-labeled recombinant protein (NP_008833)
Species:	Human
Expression Host:	HEK293
Expression cDNA Clone or AA Sequence:	RC213276
Predicted MW:	24.2 kDa
Protein Sequence:	>RC213276 representing NM_006902 Red=Cloning site Green=Tags(s) MTSSYGHVLERQPALGGRLDSPGNLDTLQAKKNFSVSHLLDLEEAGDMVAAQADENVGEAGRSLLLESPGL TSGSDTPQQDNDQLNSEEKKKRKRQRNRRTTFNSSQLQALERVFERTHYPDAFVREDLARRVNLTEARVQV WFQNRRAKFRRNERAMLANKNASLLKSYSGDVTAVEQIPVPRPAPRPTDYLSWGTASPYRSSSLPRCCLH EGLHNGF TRTRPLEQKLI SEEDLAANDILDYKDDDDKV
Tag:	C-Myc/DDK
Purity:	> 80% as determined by SDS-PAGE and Coomassie blue staining
Concentration:	>0.05 µg/µL as determined by microplate BCA method
Labeling Method:	Labeled with [U- ¹³ C ₆ , ¹⁵ N ₄]-L-Arginine and [U- ¹³ C ₆ , ¹⁵ N ₂]-L-Lysine
Buffer:	25 mM Tris-HCl, 100 mM glycine, pH 7.3
Storage:	Store at -80°C. Avoid repeated freeze-thaw cycles.
Stability:	Stable for 3 months from receipt of products under proper storage and handling conditions.
RefSeq:	NP_008833
RefSeq Size:	4071
RefSeq ORF:	651
Synonyms:	AGOTC; PHOX1; PMX1; PRX-1; PRX1
Locus ID:	5396
UniProt ID:	P54821



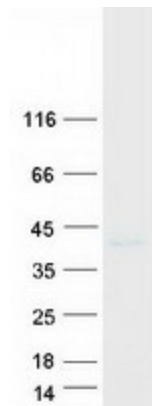
[View online »](#)

Cytogenetics: 1q24.2

Summary: The DNA-associated protein encoded by this gene is a member of the paired family of homeobox proteins localized to the nucleus. The protein functions as a transcription co-activator, enhancing the DNA-binding activity of serum response factor, a protein required for the induction of genes by growth and differentiation factors. The protein regulates muscle creatine kinase, indicating a role in the establishment of diverse mesodermal muscle types. Alternative splicing yields two isoforms that differ in abundance and expression patterns. [provided by RefSeq, Jul 2008]

Protein Families: Transcription Factors

Product images:



Coomassie blue staining of purified PRRX1 protein (Cat# [TP313276]). The protein was produced from HEK293T cells transfected with PRRX1 cDNA clone (Cat# [RC213276]) using MegaTran 2.0 (Cat# [TT210002]).