

Product datasheet for PH313260

CLCC1 (NM_001048210) Human Mass Spec Standard

Product data:

Product Type:	Mass Spec Standards
Description:	CLCC1 MS Standard C13 and N15-labeled recombinant protein (NP_001041675)
Species:	Human
Expression Host:	HEK293
Expression cDNA Clone or AA Sequence:	RC213260
Predicted MW:	61.8 kDa
Protein Sequence:	>RC213260 representing NM_001048210 Red=Cloning site Green=Tags(s)

MLCSLLLCCELLLVAGYAHDDDWIDPTDMLNYDAASGTMRSQAKYGISGEKDVSPDLSCADEISECYHK
LDLSTYKIDECEKKKREYEQSNPVFRRLNKLIEAGKLGDPENKGMHYDAEIIILKRETLLEIQKF
LNGEDWKPGALDDALSDILINFKFHDFETWKWRFEDSFGVDPYNVLMVLLCLLCIVVLVATELWTVYRWY
TQLRRVLIISFLFSLGWNWMLYKLAFAQHQAEVAKMEPLNNVCAKMDWTGSIWEWFRSSWTYKDDPCQ
KYYELLLVNIWLVPTKALAVTFTTFVTEPLKHIGKGTGEFIKALMKEIPALLHLPVLIIMALAILSFC
YGAGKSVHVLRHIGGPEREPPQALRPRDRRRQEEIDYRPDGGAGDADFHYRGQMGPTEQGPYAKTYEGRR
EILRERDVLRFQTGNKSPEVLRAFDVPAEAREHPTVVP SHKSPVLDTKPKETGGILGEGTPKESSTES
SQSAKPVSGQDTSNGTEGSPA AEKAQLKSEAAGSPDQGSTYSPARGVAGPRGQDPVSSPCG

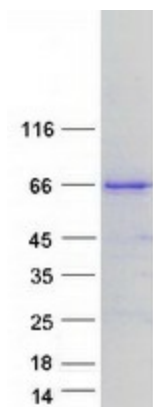
TRTRPLEQKLI SEEDLAANDILDYKDDDDKV

Tag:	C-Myc/DDK
Purity:	> 80% as determined by SDS-PAGE and Coomassie blue staining
Concentration:	>0.05 µg/µL as determined by microplate BCA method
Labeling Method:	Labeled with [U- ¹³ C ₆ , ¹⁵ N ₄]-L-Arginine and [U- ¹³ C ₆ , ¹⁵ N ₂]-L-Lysine
Buffer:	25 mM Tris-HCl, 100 mM glycine, pH 7.3
Storage:	Store at -80°C. Avoid repeated freeze-thaw cycles.
Stability:	Stable for 3 months from receipt of products under proper storage and handling conditions.
RefSeq:	NP_001041675
RefSeq Size:	4825
RefSeq ORF:	1653



[View online »](#)

Synonyms:	MCLC; RP32
Locus ID:	23155
UniProt ID:	Q96S66 , A0A024R0G0
Cytogenetics:	1p13.3
Summary:	Seems to act as a chloride ion channel.[UniProtKB/Swiss-Prot Function]
Protein Families:	Ion Channels: Other, Transmembrane

Product images:

Coomassie blue staining of purified CLCC1 protein (Cat# [TP313260]). The protein was produced from HEK293T cells transfected with CLCC1 cDNA clone (Cat# [RC213260]) using MegaTran 2.0 (Cat# [TT210002]).