

Product datasheet for PH313247

BCR (NM_021574) Human Mass Spec Standard

Product data:

| | |
|---------------------------------------|---|
| Product Type: | Mass Spec Standards |
| Description: | BCR MS Standard C13 and N15-labeled recombinant protein (NP_067585) |
| Species: | Human |
| Expression Host: | HEK293 |
| Expression cDNA Clone or AA Sequence: | RC213247 |
| Predicted MW: | 137.5 kDa |
| Protein Sequence: | >RC213247 representing NM_021574 Red=Cloning site Green=Tags(s) |

MVDPVGF AEAWKAQFPDSEPPRMELRSVGDIEQELERCKASIRRLQEVEVNERFRMIYLLQTLAKEKKS
DRQRWGFRRAAQAPDGASEPRASASRPQPAPADGADPPPAEEPEARPDGEGSPGKARPGTARRPGAASG
ERDDRGPASVAALRSNFERIRKGGHQPADAQEKPFYVNVVEFHHERGLVKVNDKEVSDRISLGSQAMQM
ERKKSQHGAGSSVGDASRPPYGRSSSESSCGVDGDYEDAELNPRFLKDNLIDANGSRPPWPPLEYQPYQ
SIYVGGMMEGEGKGPLLRSQSTSEQEKRLTWPRRSYSPRSFEDCGGGYTPDCSSNENLTSSSEDFSSGQS
SRVSPSPTTYRMFRDKSRSPSQNSQQSFDSSSPPTPQCHKRHRHCPVVVSEATIVGVRKTGQIWPNDGEG
AFHGDADGSFGTTPPGYGCAADRAEEQRRHQDGLPYIDDSPSSPHLSSKGRGRSDALVSGALESTKASEL
DLEKGLEMRKWVLSGILASEETYLSHLEALLLPMKPLKAAATTSQPVLTSQQIETIFFKVPPELYEIHKEF
YDGLFPRVQQWVSHQQRVGDLFQKLASQLGVYRAFVDNYGVAMEMAECQANAQFAEISENLRARSNKDA
KDPTTKNSLETLLYKPVDRVTRSTLVLDLHLLKHTPASHPDHPLLDALRISQNFLLSSINEEITPRRQSM
VKKGEHRQLLKDSFMVELVEGARKLRHVFLFTDLLLCTKLKQSGGKTQQYDCKWYIPLTDLDFQMVDEL
EAVPNIPVLPDEELDALKIKISQIKNDIQREKRANKGSKATERLKKLSEQESLLLLMSPSMAFRVHSRN
GKSYTFLISSDYERAEWRENIREQQKCFRSFSLTSVELQMLTNSCVKLQTVHSIPLTINKEDDESPGLY
GFLNVIHVSATGFKQSSNLYCTLEVDSFGYFVNKAKTRVYRDTAEPNWNELDPQALQDRDWQRTVIAMNG
IEVKLSVKFNSREFSLKRMPSRKQTGVFGVKIAVVTKRERSKVPYIVRQCVEEIERGMEEVGIYRVSGV
ATDIQALKAADFVNKDVSVMMSEMDVNAIAGTLKLYFRELPEPLFTDEFYPNFAEGIALSDPVAKESCM
LNLLLSLPEANLLTFLFLDLHLKRVAEKEAVNKMSLHNLATVFGPTLLRPSEKESKLPANPSQPIITMTDS
WSLEVMSQVQLLYFLQLAIPAPDSKRQSIKLFSTEV

TRTRPLEQKLI SEEDLAANDILDYKDDDDKV

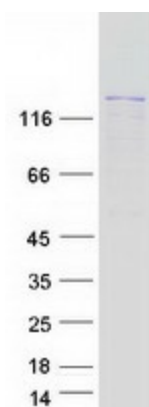
| | |
|------------------|--|
| Tag: | C-Myc/DDK |
| Purity: | > 80% as determined by SDS-PAGE and Coomassie blue staining |
| Concentration: | >0.05 µg/µL as determined by microplate BCA method |
| Labeling Method: | Labeled with [U- ¹³ C ₆ , ¹⁵ N ₄]-L-Arginine and [U- ¹³ C ₆ , ¹⁵ N ₂]-L-Lysine |



[View online »](#)

| | |
|-------------------|--|
| Buffer: | 25 mM Tris-HCl, 100 mM glycine, pH 7.3 |
| Storage: | Store at -80°C. Avoid repeated freeze-thaw cycles. |
| Stability: | Stable for 3 months from receipt of products under proper storage and handling conditions. |
| RefSeq: | NP_067585 |
| RefSeq Size: | 6795 |
| RefSeq ORF: | 3681 |
| Synonyms: | ALL; BCR1; CML; D22S11; D22S662; PHL |
| Locus ID: | 613 |
| UniProt ID: | P11274 |
| Cytogenetics: | 22q11.23 |
| Summary: | <p>A reciprocal translocation between chromosomes 22 and 9 produces the Philadelphia chromosome, which is often found in patients with chronic myelogenous leukemia. The chromosome 22 breakpoint for this translocation is located within the BCR gene. The translocation produces a fusion protein which is encoded by sequence from both BCR and ABL, the gene at the chromosome 9 breakpoint. Although the BCR-ABL fusion protein has been extensively studied, the function of the normal BCR gene product is not clear. The unregulated tyrosine kinase activity of BCR-ABL1 contributes to the immortality of leukaemic cells. The BCR protein has serine/threonine kinase activity and is a GTPase-activating protein for p21rac and other kinases. Two transcript variants encoding different isoforms have been found for this gene.[provided by RefSeq, Jan 2020]</p> |
| Protein Families: | Druggable Genome, Protein Kinase |
| Protein Pathways: | Chronic myeloid leukemia, Pathways in cancer |

Product images:



Coomassie blue staining of purified BCR protein (Cat# [TP313247]). The protein was produced from HEK293T cells transfected with BCR cDNA clone (Cat# [RC213247]) using MegaTran 2.0 (Cat# [TT210002]).