

Product datasheet for PH313239

Nardilysin (NRDC) (NM_002525) Human Mass Spec Standard

Product data:

Product Type:	Mass Spec Standards
Description:	NRD1 MS Standard C13 and N15-labeled recombinant protein (NP_002516)
Species:	Human
Expression Host:	HEK293
Expression cDNA Clone or AA Sequence:	RC213239
Predicted MW:	139.2 kDa
Protein Sequence:	>RC213239 representing NM_002525 Red=Cloning site Green=Tags(s)

MLRRVTVAAVCATRRKLCCEAGRDVAALWGIETRGRCEDSAARPFPIILAMPGRNKAKSTCSCPDLPNGQ
DLGENSRVARLGADESEEEGRRGSLSNAGDPEIVKSPSPKQYRYIKLQNGLQALLISDLNMEGKTGNT
TDEEEEEVEEEEEEDDEDSGAEIEDDDEEGFDEDEFDDEHDDDLDTEDNELEEEERAEARKKTEKQ
QLQSLFLLWSKLTDRWFKSTYSKMSSTLLVETRNLYGVVGAESRSAPVQHLAGWQAEQQGETDTVLSA
AALCVGVGSFADPDDLPLGLAHFLEHMVFMGSLKYPDENGDFDAFLKKHGGSDNASTDCERTVFQFDVQRKY
FKEALDRWAQFFIHPLMIRDAIDREVEAVDSEYQLARPSDANRKEMLFGSLARPGHPMGKFFWGNAETLK
HEPRKNNIDTHARLREFWMRYSSHYMTLVVQSKETLDTLEKVVTEIFSQIPNNGLPRPNFGHLTDPFDT
PAFNKLYRVVPIRKIHALTITWALPPQQHYRVKPLHYISWLVGHEGKGSILSFLRKKCWALALFGNGE
TGFEQNSTYSVFSISITLTDEGYEHFYEVAYTVFLYKMLQKLGPEKRIFFEEIRKIEDNEFHYQEQTDPV
EYVENMCENMQLYPLQDILTGDQLLFEYKPEVIGEALNQLVPQKANLVLLSGANEGKCDLKEKWFQTQYS
IEDIENSWAELWNSNFELNPDHLPAENKYIATDFTLKAFDCPETEYPVKIVNTPQGCLWYKDKDNKFKIP
KAYIRFHLISPLIQKSAANVFLDFIVNILTHNLAEPAYEADVAQLEYKLAAGEHGLIIRVKGFNHKLPL
LFQLIIDYLAEFNSTPAVFTMITEQLKKTYFNILIKPETLAKDVRLILEYARWSMIDKYQALMDGLSLE
SLLSFKVEFKSQLFVEGLVQGNVTSTESMDFLKYVVDKLNFKPLEQEMPVQFQVVELPSGHHLCKVKALN
KGDANSEVTVYYQSGTRSLREYTLMELLVMHMEEPDFLRTKQTLGYHVYPTCRNTSGILGFSVTVGTQ
ATKYNSEVVDKKIEEFLSSFEEKIENLTEEAFNTQVTALIKLKECEDTHLGEEVDRNWNVEVVTQQYLFDR
LAHEIEALKSFSKSDLVNWFKAHRGPGSKMLSVHVVGYGKYELEEDGSPSSEDSNSSCEVMQLTYLPTSP
LLADCIIPTDIRAFTTTLNLLPYHKIVK

TRTRPLEQKLISEEDLAANDILDYKDDDDKV

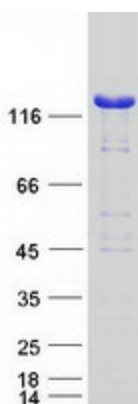
Tag:	C-Myc/DDK
Purity:	> 80% as determined by SDS-PAGE and Coomassie blue staining
Concentration:	>0.05 µg/µL as determined by microplate BCA method
Labeling Method:	Labeled with [U- ¹³ C ₆ , ¹⁵ N ₄]-L-Arginine and [U- ¹³ C ₆ , ¹⁵ N ₂]-L-Lysine



[View online »](#)

Buffer:	25 mM Tris-HCl, 100 mM glycine, pH 7.3
Storage:	Store at -80°C. Avoid repeated freeze-thaw cycles.
Stability:	Stable for 3 months from receipt of products under proper storage and handling conditions.
RefSeq:	NP_002516
RefSeq Size:	3851
RefSeq ORF:	3657
Synonyms:	hNRD1; hNRD2; NRD1
Locus ID:	4898
UniProt ID:	O43847 , Q6UUU9
Cytogenetics:	1p32.3
Summary:	This gene encodes a zinc-dependent endopeptidase that cleaves peptide substrates at the N-terminus of arginine residues in dibasic moieties and is a member of the peptidase M16 family. This protein interacts with heparin-binding EGF-like growth factor and plays a role in cell migration and proliferation. Multiple transcript variants encoding different isoforms have been found for this gene. [provided by RefSeq, May 2011]
Protein Families:	Druggable Genome, Protease

Product images:



Coomassie blue staining of purified NRDC protein (Cat# [TP313239]). The protein was produced from HEK293T cells transfected with NRDC cDNA clone (Cat# [RC213239]) using MegaTran 2.0 (Cat# [TT210002]).