

Product datasheet for PH313146

SULT1C4 (NM_006588) Human Mass Spec Standard

Product data:

Product Type:	Mass Spec Standards
Description:	SULT1C4 MS Standard C13 and N15-labeled recombinant protein (NP_006579)
Species:	Human
Expression Host:	HEK293
Expression cDNA Clone or AA Sequence:	RC213146
Predicted MW:	35.3 kDa
Protein Sequence:	>RC213146 representing NM_006588 Red =Cloning site Green =Tags(s) MALHDMEDFTFDGTRKRLSVNYVKGILQPTDTCDIWDKIWNFQAKPDDLIISTYPKAGTTWTQEIVELIQN EGDVEKSKRAPHQRFPFLEMKIPSLGSGLEQAHAMPSRILKTHLPFHLLPPSLLEKNCKIIYVARNPK DNMVSYYHFQRMNKALPAPGTWEEYFETFLAGKVCWGSWHEHVKGWWEAKDKHRILYLFYEDMKKNPKHE IQKLAEFI GK KLDKIVHYTSFDVMKQNP MANYSSIPAEIMDHSISPFMRKGAVGDWKKHFTVAQN ERFDEYKKKMTDTRLTFHFQF TRTRPLEQKLI SEEDLAANDILDYKDDDDKV
Tag:	C-Myc/DDK
Purity:	> 80% as determined by SDS-PAGE and Coomassie blue staining
Concentration:	>0.05 µg/µL as determined by microplate BCA method
Labeling Method:	Labeled with [U- ¹³ C ₆ , ¹⁵ N ₄]-L-Arginine and [U- ¹³ C ₆ , ¹⁵ N ₂]-L-Lysine
Buffer:	25 mM Tris-HCl, 100 mM glycine, pH 7.3
Storage:	Store at -80°C. Avoid repeated freeze-thaw cycles.
Stability:	Stable for 3 months from receipt of products under proper storage and handling conditions.
RefSeq:	<u>NP_006579</u>
RefSeq Size:	1664
RefSeq ORF:	906
Synonyms:	SULT1C; SULT1C2
Locus ID:	27233



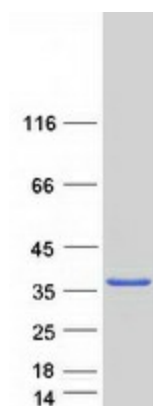
[View online »](#)

UniProt ID: [O75897](#)

Cytogenetics: 2q12.3

Summary: Sulfotransferase enzymes catalyze the sulfate conjugation of many hormones, neurotransmitters, drugs, and xenobiotic compounds. These cytosolic enzymes are different in their tissue distributions and substrate specificities. The gene structure (number and length of exons) is similar among family members. This gene encodes a protein that belongs to the SULT1 subfamily, responsible for transferring a sulfo moiety from PAPS to phenol-containing compounds. [provided by RefSeq, Jul 2008]

Product images:



Coomassie blue staining of purified SULT1C4 protein (Cat# [TP313146]). The protein was produced from HEK293T cells transfected with SULT1C4 cDNA clone (Cat# [RC213146]) using MegaTran 2.0 (Cat# [TT210002]).