

Product datasheet for PH313102

SDF2L1 (NM_022044) Human Mass Spec Standard

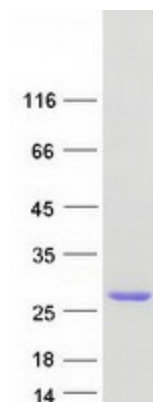
Product data:

Product Type:	Mass Spec Standards
Description:	SDF2L1 MS Standard C13 and N15-labeled recombinant protein (NP_071327)
Species:	Human
Expression Host:	HEK293
Expression cDNA Clone or AA Sequence:	RC213102
Predicted MW:	20.9 kDa
Protein Sequence:	<p>>RC213102 representing NM_022044</p> <p>Red=Cloning site Green=Tags(s)</p> <p>MWSAGRGGAAWPVLLGLLLALLVPGGGAAGTGAELVTCGSVLKLLNTHHRVRLHSHDIKYGSGGQQSVT GVEASDDANSYWRIRGGSEGGCPRGSPVRCGQAVRLTHVLTGKNLHTHHFPSPLSNNQEVSAFGEDGEGD DLDLWTVRCSGQHWEREAAVRFQHVGTSVFLSVTGEQYGSPIRGQHEVHGMP SANTHNTWKAMEGIFIKP SVEPSAGHDEL</p> <p>TRTRPLEQKLISEEDLAANDILDYKDDDDKV</p>
Tag:	C-Myc/DDK
Purity:	> 80% as determined by SDS-PAGE and Coomassie blue staining
Concentration:	>0.05 µg/µL as determined by microplate BCA method
Labeling Method:	Labeled with [U- ¹³ C ₆ , ¹⁵ N ₄]-L-Arginine and [U- ¹³ C ₆ , ¹⁵ N ₂]-L-Lysine
Buffer:	25 mM Tris-HCl, 100 mM glycine, pH 7.3
Storage:	Store at -80°C. Avoid repeated freeze-thaw cycles.
Stability:	Stable for 3 months from receipt of products under proper storage and handling conditions.
RefSeq:	NP_071327
RefSeq Size:	876
RefSeq ORF:	663
Locus ID:	23753
UniProt ID:	Q9HCN8
Cytogenetics:	22q11.21


[View online »](#)

Protein Families: Transmembrane

Product images:



Coomassie blue staining of purified SDF2L1 protein (Cat# [TP313102]). The protein was produced from HEK293T cells transfected with SDF2L1 cDNA clone (Cat# [RC213102]) using MegaTran 2.0 (Cat# [TT210002]).