

## Product datasheet for PH313095

### UBE2H (NM\_182697) Human Mass Spec Standard

#### Product data:

Product Type:	Mass Spec Standards
Description:	UBE2H MS Standard C13 and N15-labeled recombinant protein (NP_874356)
Species:	Human
Expression Host:	HEK293
Expression cDNA Clone or AA Sequence:	RC213095
Predicted MW:	17 kDa
Protein Sequence:	>RC213095 representing NM_182697 Red=Cloning site Green=Tags(s)  MSSSPSPGKRRMDTDVVKLIIESKHEVTILGGLNEFVVKFYGPQGTPEYEGGVKVRVDLPDKYPFKSPSIDL TNIFESFLPQLLAYPNPIDPLNGDAAAMYLHRPEEYKQKIKIKEYIQKYATEEALKEQEEGTGDSSSESSMS DFSEDEAQDMEL  TRTRPLEQKLISEEDLAANDILDYKDDDDKV
Tag:	C-Myc/DDK
Purity:	> 80% as determined by SDS-PAGE and Coomassie blue staining
Concentration:	>0.05 µg/µL as determined by microplate BCA method
Labeling Method:	Labeled with [U- <sup>13</sup> C <sub>6</sub> , <sup>15</sup> N <sub>4</sub> ]-L-Arginine and [U- <sup>13</sup> C <sub>6</sub> , <sup>15</sup> N <sub>2</sub> ]-L-Lysine
Buffer:	25 mM Tris-HCl, 100 mM glycine, pH 7.3
Storage:	Store at -80°C. Avoid repeated freeze-thaw cycles.
Stability:	Stable for 3 months from receipt of products under proper storage and handling conditions.
RefSeq:	<a href="#">NP_874356</a>
RefSeq Size:	2635
RefSeq ORF:	456
Synonyms:	E2-20K; GID3; UBC8; UBCH; UBCH2
Locus ID:	7328
UniProt ID:	<a href="#">P62256</a>



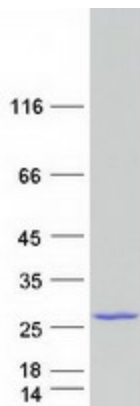
[View online »](#)

**Cytogenetics:** 7q32.2

**Summary:** The modification of proteins with ubiquitin is an important cellular mechanism for targeting abnormal or short-lived proteins for degradation. Ubiquitination involves at least three classes of enzymes: ubiquitin-activating enzymes, or E1s, ubiquitin-conjugating enzymes, or E2s, and ubiquitin-protein ligases, or E3s. This gene encodes a member of the E2 ubiquitin-conjugating enzyme family. The encoded protein sequence is 100% identical to the mouse homolog and 98% identical to the frog and zebrafish homologs. Three alternatively spliced transcript variants have been found for this gene and they encode distinct isoforms. [provided by RefSeq, Feb 2011]

**Protein Pathways:** Ubiquitin mediated proteolysis

**Product images:**



Coomassie blue staining of purified UBE2H protein (Cat# [TP313095]). The protein was produced from HEK293T cells transfected with UBE2H cDNA clone (Cat# [RC213095]) using MegaTran 2.0 (Cat# [TT210002]).