

Product datasheet for PH313087

KLF14 (NM_138693) Human Mass Spec Standard

Product data:

Product Type:	Mass Spec Standards
Description:	KLF14 MS Standard C13 and N15-labeled recombinant protein (NP_619638)
Species:	Human
Expression Host:	HEK293
Expression cDNA Clone or AA Sequence:	RC213087
Predicted MW:	32.9 kDa
Protein Sequence:	>RC213087 representing NM_138693 Red=Cloning site Green=Tags(s) MSAAVAACLDYFAAECLVSMAGAVVHRRPPDPEGAGGAAGSEVGAHPESALPGPGSPGASVPQLPQVP APSPGAGGAAPHLLAASVWADLRGSSGEGSWENSGEAPRASSGFSDPIPCSVQTPCSELAPASGAAVCA PESSSDAPAVPSAPAAPGAPAASGGFSGGALGAGPAPAADQAPRRRSVTPAAKRHQCPFGCTKAYYKSS HLKSHQRTHTGERPFSCDWLDCDKKFTRSEDELARHYRTHTEKRFSCPLCPKQFSRSDHLTKHARRHPT HPDMIERYRGRRTPRIDPPLTSEVESSASGSGPGPAPSFTTCL SGPTRRRLEQKLISEEDLAANDILDYKDDDDKV
Tag:	C-Myc/DDK
Purity:	> 80% as determined by SDS-PAGE and Coomassie blue staining
Concentration:	>0.05 µg/µL as determined by microplate BCA method
Labeling Method:	Labeled with [U- ¹³ C ₆ , ¹⁵ N ₄]-L-Arginine and [U- ¹³ C ₆ , ¹⁵ N ₂]-L-Lysine
Buffer:	25 mM Tris-HCl, 100 mM glycine, pH 7.3
Storage:	Store at -80°C. Avoid repeated freeze-thaw cycles.
Stability:	Stable for 3 months from receipt of products under proper storage and handling conditions.
RefSeq:	NP_619638
RefSeq Size:	1383
RefSeq ORF:	969
Synonyms:	BTEB5
Locus ID:	136259



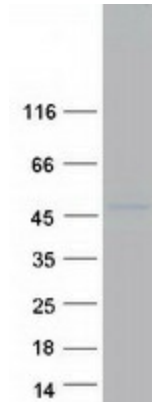
[View online »](#)

UniProt ID: [Q8TD94](#)

Cytogenetics: 7q32.2

Summary: This intronless gene encodes a member of the Kruppel-like family of transcription factors. The encoded protein functions as a transcriptional co-repressor, and is induced by transforming growth factor-beta (TGF-beta) to repress TGF-beta receptor II gene expression. This gene exhibits imprinted expression from the maternal allele in embryonic and extra-embryonic tissues. [provided by RefSeq, Jul 2013]

Product images:



Coomassie blue staining of purified KLF14 protein (Cat# [TP313087]). The protein was produced from HEK293T cells transfected with KLF14 cDNA clone (Cat# [RC213087]) using MegaTran 2.0 (Cat# [TT210002]).