

Product datasheet for PH313074

EPS8L1 (NM_133180) Human Mass Spec Standard

Product data:

Product Type:	Mass Spec Standards
Description:	EPS8L1 MS Standard C13 and N15-labeled recombinant protein (NP_573441)
Species:	Human
Expression Host:	HEK293
Expression cDNA Clone or AA Sequence:	RC213074
Predicted MW:	80.1 kDa
Protein Sequence:	>RC213074 representing NM_133180 Red=Cloning site Green=Tags(s)

MSTATGPEAAPKPSAKSIYEQRKRYSTVVMADVSQYPVNHVLTFLGEDDGVHTVEDASRKLAVMDSQGR
VWAQEMLLRVSPDHVTLTLDPASKEELESYPLGAIVRCDVMPGRRSRLLLVCQEPERAQPDVHFFQGL
RLGAELIREDIQGALHNYRSGRGERRAAALRATQEELQRDRSPAETPPLQRRPSVRAVISTVERGAGRG
RPQAKPIPEAEEAQRPEPVGTSSNADSASPDLGPRGPDVLAQAEREVDILNHVFDVSEFVSRLQKSAE
AARVLEHRERGRSRRAAGEGLLTLRAKPPSEAEYTDVLQKIKYAFSLARLRGNIADPSSPELLHFLF
GPLQMI VNTSGGPEFASSVRRPHLTSDAVALLRDNVTPRENELWTSLGDSWTRPGLLESPEEGPPYRPEF
FSGWEPVTDQSRWEDPVEKQLQHERRRRQQSAPQVAVNGHRDLEPESEPLESETAGKWVLCNYDFQ
ARNSEL SVKQRDYLEVLDDSRKWWKVRDPAGQEGYVPYNILTPYPGPRLHHSQSPARSLNSTPPPPPPAP
APAPPPALARPRWDRPRWDCDSLNGLDPSEKEKFSQMLIVNEELQARLAQGRSGPSRAVPGPRAPPEPQL
SPGSDASEVRAWLQAKGFSSGTVDALGVLGTGAQLFSLQKEELRAVSPEEGARVYSQVTVQRSLLLEDKKVI
SELEAVMEKQKKKVEGEVEMVI

TRTRPLEQKLISEEDLAANDILDYKDDDDKV

Tag:	C-Myc/DDK
Purity:	> 80% as determined by SDS-PAGE and Coomassie blue staining
Concentration:	>0.05 µg/µL as determined by microplate BCA method
Labeling Method:	Labeled with [U- 13C6, 15N4]-L-Arginine and [U- 13C6, 15N2]-L-Lysine
Buffer:	25 mM Tris-HCl, 100 mM glycine, pH 7.3
Storage:	Store at -80°C. Avoid repeated freeze-thaw cycles.
Stability:	Stable for 3 months from receipt of products under proper storage and handling conditions.
RefSeq:	NP_573441



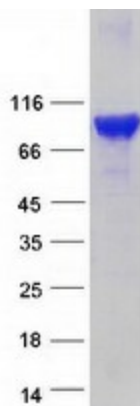
[View online »](#)

RefSeq Size: 2543
RefSeq ORF: 2169
Synonyms: DRC3; EPS8R1; PP10566
Locus ID: 54869
UniProt ID: [Q8TE68](#)
Cytogenetics: 19q13.42

Summary: This gene encodes a protein that is related to epidermal growth factor receptor pathway substrate 8 (EPS8), a substrate for the epidermal growth factor receptor. The function of this protein is unknown. At least two alternatively spliced transcript variants encoding different isoforms have been found for this gene. [provided by RefSeq, Jul 2008]

Protein Families: Druggable Genome

Product images:



Coomassie blue staining of purified EPS8L1 protein (Cat# [TP313074]). The protein was produced from HEK293T cells transfected with EPS8L1 cDNA clone (Cat# [RC213074]) using MegaTran 2.0 (Cat# [TT210002]).