

Product datasheet for PH313051

Tcl1 (TCL1A) (NM_001098725) Human Mass Spec Standard

Product data:

Product Type:	Mass Spec Standards
Description:	TCL1A MS Standard C13 and N15-labeled recombinant protein (NP_001092195)
Species:	Human
Expression Host:	HEK293
Expression cDNA Clone or AA Sequence:	RC213051
Predicted MW:	13.5 kDa
Protein Sequence:	>RC213051 protein sequence Red=Cloning site Green=Tags(s) MAECPTLGEAVTDHPDRLWAWKEFVYLDEKQHAWLPLTIEIKDRLQLRVLLRREDVVLGRPMTPTQIGPS LLPIMWQLYPDGRYRSSDSSFWRVYHIKIDGVEDMLLELLPDD TRTRPLEQKLI SEEDLAANDILDYKDDDDKV
Tag:	C-Myc/DDK
Purity:	> 80% as determined by SDS-PAGE and Coomassie blue staining
Concentration:	>0.05 µg/µL as determined by microplate BCA method
Labeling Method:	Labeled with [U- 13C6, 15N4]-L-Arginine and [U- 13C6, 15N2]-L-Lysine
Buffer:	25 mM Tris-HCl, 100 mM glycine, pH 7.3
Storage:	Store at -80°C. Avoid repeated freeze-thaw cycles.
Stability:	Stable for 3 months from receipt of products under proper storage and handling conditions.
RefSeq:	NP_001092195
RefSeq Size:	1405
RefSeq ORF:	342
Synonyms:	TCL1
Locus ID:	8115
UniProt ID:	P56279 , A0A024R6G5
Cytogenetics:	14q32.13



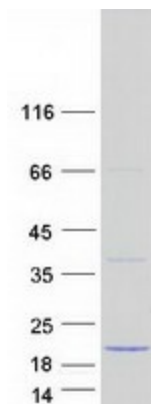
[View online »](#)

Summary:

Overexpression of the TCL1 gene in humans has been implicated in the development of mature T cell leukemia, in which chromosomal rearrangements bring the TCL1 gene in close proximity to the T-cell antigen receptor (TCR)-alpha (MIM 186880) or TCR-beta (MIM 186930) regulatory elements (summarized by Virgilio et al., 1998 [PubMed 9520462]). In normal T cells TCL1 is expressed in CD4-/CD8- cells, but not in cells at later stages of differentiation. TCL1 functions as a coactivator of the cell survival kinase AKT (MIM 164730) (Laine et al., 2000 [PubMed 10983986]).[supplied by OMIM, Jul 2010]

Protein Families:

Druggable Genome

Product images:

Coomassie blue staining of purified TCL1A protein (Cat# [TP313051]). The protein was produced from HEK293T cells transfected with TCL1A cDNA clone (Cat# [RC213051]) using MegaTran 2.0 (Cat# [TT210002]).