

Product datasheet for PH313043

Amino terminal enhancer of split (AES) (NM_198970) Human Mass Spec Standard

Product data:

Product Type:	Mass Spec Standards
Description:	AES MS Standard C13 and N15-labeled recombinant protein (NP_945321)
Species:	Human
Expression Host:	HEK293
Expression cDNA Clone or AA Sequence:	RC213043
Predicted MW:	21.7 kDa
Protein Sequence:	>RC213043 representing NM_198970 Red=Cloning site Green=Tags(s) MMFPQSRHSGSSHLPPQLKFTTSDSCDRKDEFQLLQAQYHSLKLECDKLASEKSEMQRHYVMYEMSYG LNIEMHKQAEIVKRLNGICAQVLPYLSQEHQQVVLGAIERAKQVTAPELNSIIRQLQAHQLSQLQALALP LTPLPVGLQPPSLPAVSAGTGLLSLSALGSAHLSKEDKNGHDGDTHQEDDGEKSD TRTRPLEQKLISEEDLAANDILDYKDDDDKV
Tag:	C-Myc/DDK
Purity:	> 80% as determined by SDS-PAGE and Coomassie blue staining
Concentration:	>0.05 µg/µL as determined by microplate BCA method
Labeling Method:	Labeled with [U- 13C6, 15N4]-L-Arginine and [U- 13C6, 15N2]-L-Lysine
Buffer:	25 mM Tris-HCl, 100 mM glycine, pH 7.3
Storage:	Store at -80°C. Avoid repeated freeze-thaw cycles.
Stability:	Stable for 3 months from receipt of products under proper storage and handling conditions.
RefSeq:	NP_945321
RefSeq Size:	1684
RefSeq ORF:	588
Synonyms:	AES; AES-1; AES-2; ESP1; GRG; Grg-5; GRG5
Locus ID:	166
UniProt ID:	Q08117 , Q8WY48



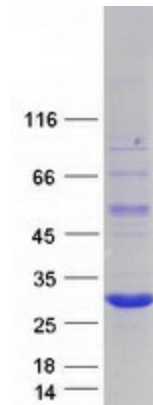
[View online »](#)

Cytogenetics: 19p13.3

Summary: The protein encoded by this gene is similar in sequence to the amino terminus of Drosophila enhancer of split groucho, a protein involved in neurogenesis during embryonic development. The encoded protein, which belongs to the groucho/TLE family of proteins, can function as a homooligomer or as a heterooligimer with other family members to dominantly repress the expression of other family member genes. Three transcript variants encoding different isoforms have been found for this gene. [provided by RefSeq, Jul 2008]

Protein Families: Druggable Genome, Transcription Factors

Product images:



Coomassie blue staining of purified TLE5 protein (Cat# [TP313043]). The protein was produced from HEK293T cells transfected with TLE5 cDNA clone (Cat# [RC213043]) using MegaTran 2.0 (Cat# [TT210002]).