

Product datasheet for PH313031

LAD1 (NM_005558) Human Mass Spec Standard

Product data:

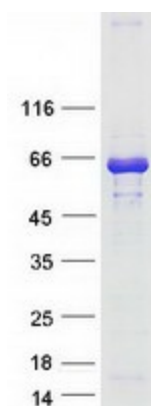
Product Type:	Mass Spec Standards
Description:	LAD1 MS Standard C13 and N15-labeled recombinant protein (NP_005549)
Species:	Human
Expression Host:	HEK293
Expression cDNA Clone or AA Sequence:	RC213031
Predicted MW:	57 kDa
Protein Sequence:	>RC213031 representing NM_005558 Red=Cloning site Green=Tags(s)
	MAVSRKDWSSALSSLARQRTLEDEEEQERERRRRHRNLSSTTDDEAPRLSQNGDRQASASERLPSVEEAEV PKPLPPASKDEDEDIQSILRTRQERRRQVVEAAQAPIQERLEAEEGRNSLSPVQATQKPLVSKKELEI PPRRRLSREQRPWALEEESLVGREPEERKKGVPEKSPVLEKSSMPKKTAPEKSLVSDKTSISEKVLASE KTSLSEKIAVSEKRNSEKKSVELEKTSVSEKSLAPGMALGSGRRLVSEKASIFEKALASEKSPTADAKPA PKRATASEQPLAQEPPASGGSPATTKEQRGRALPGKNLPSLAEQGASDPPTVASRLPPVTLQVKIPSKEE EADMSSPTQRTYSSSLKRSSPTISFRMKPKKENSETTLTRSASMKLPDNTVKLGEKLERYHTAIRRSES VKSRLPCTELFVAPVGVASKRHLFEKELAGQSRAEPASSRKENLRLSGVVTSSLNLWISRTQESGDQDP QEAQKASSATERSQWGQKSDSSSLDAEV
	TRTRPLEQKLISEEDLAANDILDYKDDDDKV
Tag:	C-Myc/DDK
Purity:	> 80% as determined by SDS-PAGE and Coomassie blue staining
Concentration:	>0.05 µg/µL as determined by microplate BCA method
Labeling Method:	Labeled with [U- ¹³ C ₆ , ¹⁵ N ₄]-L-Arginine and [U- ¹³ C ₆ , ¹⁵ N ₂]-L-Lysine
Buffer:	25 mM Tris-HCl, 100 mM glycine, pH 7.3
Storage:	Store at -80°C. Avoid repeated freeze-thaw cycles.
Stability:	Stable for 3 months from receipt of products under proper storage and handling conditions.
RefSeq:	NP_005549
RefSeq Size:	2869
RefSeq ORF:	1551



[View online »](#)

Synonyms:	LadA
Locus ID:	3898
UniProt ID:	O00515
Cytogenetics:	1q32.1
Summary:	The protein encoded by this gene may be an anchoring filament that is a component of basement membranes. It may contribute to the stability of the association of the epithelial layers with the underlying mesenchyme. [provided by RefSeq, Jul 2008]
Protein Families:	Secreted Protein

Product images:



Coomassie blue staining of purified LAD1 protein (Cat# [TP313031]). The protein was produced from HEK293T cells transfected with LAD1 cDNA clone (Cat# [RC213031]) using MegaTran 2.0 (Cat# [TT210002]).