

Product datasheet for PH313024

C20orf30 (TMEM230) (NM_001009924) Human Mass Spec Standard

Product data:

Product Type:	Mass Spec Standards
Description:	C20orf30 MS Standard C13 and N15-labeled recombinant protein (NP_001009924)
Species:	Human
Expression Host:	HEK293
Expression cDNA Clone or AA Sequence:	RC213024
Predicted MW:	13.2 kDa
Protein Sequence:	>RC213024 protein sequence Red =Cloning site Green =Tags(s) MMPSRTNLATGIPSSKVKYSRLSSTDDGYIDLQFKKTPPKIPYKAIALATVLFLLIGAFLLIIIGSLLLLSGY ISKGGADRAVPVLIIGILVFLPGFYHLRIAYYASKGYRAYSYDDIPDFDD TRTRPLEQKLISEEDLAANDILDYKDDDDKV
Tag:	C-Myc/DDK
Purity:	> 80% as determined by SDS-PAGE and Coomassie blue staining
Concentration:	>0.05 µg/µL as determined by microplate BCA method
Labeling Method:	Labeled with [U- ¹³ C ₆ , ¹⁵ N ₄]-L-Arginine and [U- ¹³ C ₆ , ¹⁵ N ₂]-L-Lysine
Buffer:	25 mM Tris-HCl, 100 mM glycine, pH 7.3
Storage:	Store at -80°C. Avoid repeated freeze-thaw cycles.
Stability:	Stable for 3 months from receipt of products under proper storage and handling conditions.
RefSeq:	NP_001009924
RefSeq Size:	1792
RefSeq ORF:	360
Synonyms:	C20orf30; dj11116H23.2.1; HSPC274
Locus ID:	29058
UniProt ID:	Q96A57
Cytogenetics:	20p13-p12.3



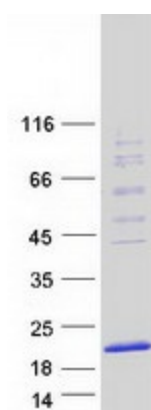
[View online »](#)

Summary:

This gene encodes a multi-pass transmembrane protein that belongs to the TMEM134/TMEM230 protein family. The encoded protein localizes to secretory and recycling vesicle in the neuron and may be involved in synaptic vesicles trafficking and recycling. Mutations in this gene may be linked to familial Parkinson's disease. [provided by RefSeq, Mar 2017]

Protein Families:

Transmembrane

Product images:

Coomassie blue staining of purified TMEM230 protein (Cat# [TP313024]). The protein was produced from HEK293T cells transfected with TMEM230 cDNA clone (Cat# [RC213024]) using MegaTran 2.0 (Cat# [TT210002]).