

Product datasheet for PH313014

PLA2G10 (NM_003561) Human Mass Spec Standard

Product data:

Product Type:	Mass Spec Standards
Description:	PLA2G10 MS Standard C13 and N15-labeled recombinant protein (NP_003552)
Species:	Human
Expression Host:	HEK293
Expression cDNA Clone or AA Sequence:	RC213014
Predicted MW:	18.2 kDa
Protein Sequence:	>RC213014 protein sequence Red=Cloning site Green=Tags(s) MGPLPVCLPIMLLLLLPSLLLLLLLPGPSGEASRILRVHRRGILELAGTVGCVGPRTPAIYMKYGCFCG LGGHGQPRDAIDWCCHGHDCCYTRAEEAGCSPKTERYSWQCVNQSVLCGPAENKCQELLCKCDQEIANCL AQTEYNLKYLFYPQFLCEPDSPKCD TRTRPLEQKLI SEEDLAANDILDYKDDDDKV
Tag:	C-Myc/DDK
Purity:	> 80% as determined by SDS-PAGE and Coomassie blue staining
Concentration:	>0.05 µg/µL as determined by microplate BCA method
Labeling Method:	Labeled with [U- 13C6, 15N4]-L-Arginine and [U- 13C6, 15N2]-L-Lysine
Buffer:	25 mM Tris-HCl, 100 mM glycine, pH 7.3
Storage:	Store at -80°C. Avoid repeated freeze-thaw cycles.
Stability:	Stable for 3 months from receipt of products under proper storage and handling conditions.
RefSeq:	NP_003552
RefSeq Size:	1020
RefSeq ORF:	495
Synonyms:	GXPLA2; GXSPLA2; SPLA2; sPLA2-X
Locus ID:	8399
UniProt ID:	O15496



[View online »](#)

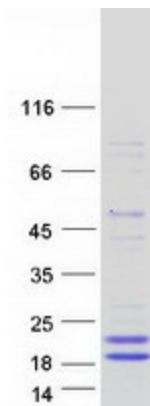
Cytogenetics: 16p13.12

Summary: This gene encodes a member of the phospholipase A2 family of proteins. Alternative splicing results in multiple transcript variants, at least one of which encodes a preproprotein that is proteolytically processed to generate the mature enzyme. This calcium-dependent enzyme hydrolyzes glycerophospholipids to produce free fatty acids and lysophospholipids. In one example, this enzyme catalyzes the release of arachidonic acid from cell membrane phospholipids, thus playing a role in the production of various inflammatory lipid mediators, such as prostaglandins. The encoded protein may promote the survival of breast cancer cells through its role in lipid metabolism. [provided by RefSeq, Nov 2015]

Protein Families: Druggable Genome, Secreted Protein, Transmembrane

Protein Pathways: alpha-Linolenic acid metabolism, Arachidonic acid metabolism, Ether lipid metabolism, Fc epsilon RI signaling pathway, Glycerophospholipid metabolism, GnRH signaling pathway, Linoleic acid metabolism, Long-term depression, MAPK signaling pathway, Metabolic pathways, Vascular smooth muscle contraction, VEGF signaling pathway

Product images:



Coomassie blue staining of purified PLA2G10 protein (Cat# [TP313014]). The protein was produced from HEK293T cells transfected with PLA2G10 cDNA clone (Cat# [RC213014]) using MegaTran 2.0 (Cat# [TT210002]).