

Product datasheet for PH313007

CPT1C (NM_152359) Human Mass Spec Standard

Product data:

Product Type:	Mass Spec Standards
Description:	CPT1C MS Standard C13 and N15-labeled recombinant protein (NP_689572)
Species:	Human
Expression Host:	HEK293
Expression cDNA Clone or AA Sequence:	RC213007
Predicted MW:	90.8 kDa
Protein Sequence:	>RC213007 representing NM_152359 Red=Cloning site Green=Tags(s)

MAEAHQAVGFRPSLTSDGAEVELSAPVLQEIYLSGLRSWKRHLSRFWNDFLTGVFPASPLSWLFLFSAIQ
LAWFLQLDPSLGLMEKIKELLPDWGGQHHGLRGVLAALFASCLWGALIFTLHVALRLLLSYHGWLLEPH
GAMSSPTKTWLALVRIFSGRHPMLFSYQRSLPRQPVPSVQDTPVRKYLESVRPILSDEDFDWTAVLAQEFL
RLQASLLQWYLRLLKSWWASNYVSDWEEFVYLRNPLMVNSNYMMDFLYVTPPLQAARAGNAVHALL
LYRHRLNRQEIPTLLMGMPLCSAQYEKIFNTTRIPGVQKDYIRHLHDSQHVAVFHRGRFFRMGTHSRN
SLLSPRALEQQFQRILDDPSPACPHEEHLAALTAAPRGTWAQVRTSLKTQAAEALAVEGAFFVSLDAE
PAGLTREDPAASLDAYAHALLAGRGHWRWFDKSF TLIVF SNGKLGLSVEHSWADCPISGHMWEFTLATEC
FQLGYSTDGHCKGHPDPTLPQPQLQWDLPDQIHSSISLALRGAKILSENV DCHVVPFSLFGKSFIRRCH
LSSDSFIQIALQLAHFRDRGQFCLTYESAMTRLFLEGRTEVTRSCTREACNFVRAMEDKEKTDQPCLALF
RVAVDKHQALLKAAMSGQVDRHLFALYIVSRFLHLQSPFLTQVHSEQWQLSTSQIPVQQMHLFDVHNYP
DYVSSGGGFGPADDHGYVSYIFMGDGMITFHISSKKSSTKTDSHRLGQHIEDALLDVASLFGAQGHFKR
RFRGSGKENSRRRCGFLSRQTGASKASMTSTDF

TRTRPLEQKLI SEEDLAANDILDYKDDDDKV

Tag:	C-Myc/DDK
Purity:	> 80% as determined by SDS-PAGE and Coomassie blue staining
Concentration:	>0.05 µg/µL as determined by microplate BCA method
Labeling Method:	Labeled with [U- ¹³ C ₆ , ¹⁵ N ₄]-L-Arginine and [U- ¹³ C ₆ , ¹⁵ N ₂]-L-Lysine
Buffer:	25 mM Tris-HCl, 100 mM glycine, pH 7.3
Storage:	Store at -80°C. Avoid repeated freeze-thaw cycles.
Stability:	Stable for 3 months from receipt of products under proper storage and handling conditions.
RefSeq:	NP_689572



[View online »](#)

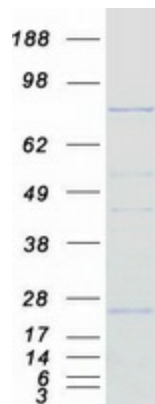
RefSeq Size:	2772
RefSeq ORF:	2409
Synonyms:	CATL1; CPT1-B; CPT1P; CPTI-B; CPTIC; SPG73
Locus ID:	126129
UniProt ID:	Q8TCG5 , A0A024QZE3
Cytogenetics:	19q13.33

Summary: This gene encodes a member of the carnitine/choline acetyltransferase family. The encoded protein regulates the beta-oxidation and transport of long-chain fatty acids into mitochondria, and may play a role in the regulation of feeding behavior and whole-body energy homeostasis. Alternatively spliced transcript variants encoding multiple protein isoforms have been observed for this gene. [provided by RefSeq, Dec 2010]

Protein Families: Druggable Genome, Transmembrane

Protein Pathways: Adipocytokine signaling pathway, Fatty acid metabolism, PPAR signaling pathway

Product images:



Coomassie blue staining of purified CPT1C protein (Cat# [TP313007]). The protein was produced from HEK293T cells transfected with CPT1C cDNA clone (Cat# [RC213007]) using MegaTran 2.0 (Cat# [TT210002]).