

Product datasheet for PH312975

Macrophage inflammatory protein 5 (CCL15) (NM_032964) Human Mass Spec Standard

Product data:

Product Type:	Mass Spec Standards
Description:	CCL15 MS Standard C13 and N15-labeled recombinant protein (NP_116740)
Species:	Human
Expression Host:	HEK293
Expression cDNA Clone or AA Sequence:	RC212975
Predicted MW:	12.7 kDa
Protein Sequence:	>RC212975 representing NM_032964 Red=Cloning site Green=Tags(s) MKVSVAAALSCLMLVAVLGSQAQFTNDAETELMMSKLPLENPVVLNSFHFAADCCTSYISQSIPCSLMKSY FETSSECSKPGVIFLTKKGRQVCAKPSGPGVQDCMKKLPYSI TRTRPLEQKLI SEEDLAANDILDYKDDDDKV
Tag:	C-Myc/DDK
Purity:	> 80% as determined by SDS-PAGE and Coomassie blue staining
Concentration:	>0.05 µg/µL as determined by microplate BCA method
Labeling Method:	Labeled with [U- ¹³ C ₆ , ¹⁵ N ₄]-L-Arginine and [U- ¹³ C ₆ , ¹⁵ N ₂]-L-Lysine
Buffer:	25 mM Tris-HCl, 100 mM glycine, pH 7.3
Storage:	Store at -80°C. Avoid repeated freeze-thaw cycles.
Stability:	Stable for 3 months from receipt of products under proper storage and handling conditions.
RefSeq:	NP_116740
RefSeq Size:	1344
RefSeq ORF:	339
Synonyms:	HCC-2; HMRP-2B; Lkn-1; LKN1; MIP-1d; MIP-5; NCC-3; NCC3; SCYA15; SCYL3; SY15
Locus ID:	6359
UniProt ID:	Q16663
Cytogenetics:	17q12



[View online »](#)

Summary:

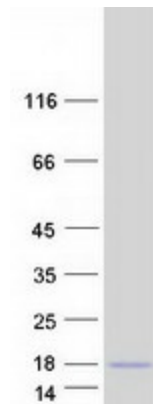
This gene is located in a cluster of similar genes in the same region of chromosome 17. These genes encode CC cytokines, which are secreted proteins characterized by two adjacent cysteines. The product of this gene is chemotactic for T cells and monocytes, and acts through C-C chemokine receptor type 1 (CCR1). The proprotein is further processed into numerous smaller functional peptides. Naturally-occurring readthrough transcripts occur from this gene into the downstream gene, CCL14 (chemokine (C-C motif) ligand 14). [provided by RefSeq, Jan 2013]

Protein Families:

Druggable Genome, Secreted Protein, Transmembrane

Protein Pathways:

Chemokine signaling pathway, Cytokine-cytokine receptor interaction

Product images:

Coomassie blue staining of purified CCL15 protein (Cat# [TP312975]). The protein was produced from HEK293T cells transfected with CCL15 cDNA clone (Cat# [RC212975]) using MegaTran 2.0 (Cat# [TT210002]).