

## Product datasheet for PH312971

### TAF1 48 (TAF1A) (NM\_005681) Human Mass Spec Standard

#### Product data:

Product Type:	Mass Spec Standards
Description:	TAF1A MS Standard C13 and N15-labeled recombinant protein (NP_005672)
Species:	Human
Expression Host:	HEK293
Expression cDNA Clone or AA Sequence:	RC212971
Predicted MW:	52.5 kDa
Protein Sequence:	>RC212971 representing NM_005681 Red=Cloning site Green=Tags(s)
	MSDFSEELKGPVTDDEEVETSVLSGAGMHFPWLQTYVETVAIGGKRRKDFAQTTSACLSFIQEALLKHQW QQAAEYMYSYFQTLESDSYKRQAPEIIWKLGSEILFYHPKSNMESFNTFANRMKNIGVMNYLKI SLQH ALYLLHHGMLKDAKRNLSEAETWRHGENTSSREILINLIQAYKGLLQYYTWSEKKMELSKLDKDDYAYNA VAQDVFNHWSKTSANISALIKIPGVWDPFVKSYVEMLEFYGDRDGAQEVLTNYAYDEKFPSNPNNAHIYLY NFLKRQKAPRSKLSVLKILYQIVPSHKLMLFHTLLRKSEKEEHRKLGLEVLFGVLDFACTKNITAWK YLAKYLKNILMGNHLAWQEEWNSRKNWWPGFHF SYFWAKSDWKEDTALACEKAFVAGLLL GKGCYFRY ILKQDHQILGKKIKRMKRSVKKYSIVNPRL
	TRTRPLEQKLI SEEDLAANDILDYKDDDDKV
Tag:	C-Myc/DDK
Purity:	> 80% as determined by SDS-PAGE and Coomassie blue staining
Concentration:	>0.05 µg/µL as determined by microplate BCA method
Labeling Method:	Labeled with [U- 13C6, 15N4]-L-Arginine and [U- 13C6, 15N2]-L-Lysine
Buffer:	25 mM Tris-HCl, 100 mM glycine, pH 7.3
Storage:	Store at -80°C. Avoid repeated freeze-thaw cycles.
Stability:	Stable for 3 months from receipt of products under proper storage and handling conditions.
RefSeq:	<a href="#">NP_005672</a>
RefSeq Size:	1893
RefSeq ORF:	1350
Synonyms:	MGC:17061; RAFI48; SL1; TAFI48



[View online »](#)

Locus ID: 9015

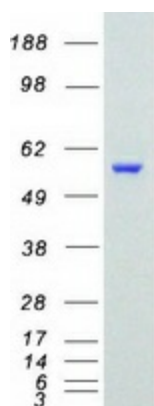
UniProt ID: [Q15573](#), [B4DS21](#)

Cytogenetics: 1q41

**Summary:** This gene encodes a subunit of the RNA polymerase I complex, Selectivity Factor I (SLI). The encoded protein is a TATA box-binding protein-associated factor that plays a role in the assembly of the RNA polymerase I preinitiation complex. Alternate splicing results in multiple transcript variants encoding multiple isoforms.[provided by RefSeq, Jan 2011]

**Protein Families:** Transcription Factors

### Product images:



Coomassie blue staining of purified TAF1A protein (Cat# [TP312971]). The protein was produced from HEK293T cells transfected with TAF1A cDNA clone (Cat# [RC212971]) using MegaTran 2.0 (Cat# [TT210002]).