

Product datasheet for PH312931

Macrophage Scavenger Receptor I (MSR1) (NM_002445) Human Mass Spec Standard

Product data:

Product Type:	Mass Spec Standards
Description:	MSR1 MS Standard C13 and N15-labeled recombinant protein (NP_002436)
Species:	Human
Expression Host:	HEK293
Expression cDNA Clone or AA Sequence:	RC212931
Predicted MW:	39.4 kDa
Protein Sequence:	>RC212931 representing NM_002445 Red=Cloning site Green=Tags(s) MEQWDHFHNQQEDTDCSESVKFDARSMTALLPPNPKNSPSLQEKLSFKAAALIALYLLVFVAVLIPLIGI VAAQLLKWETKNCSVSSTNANDITQSLTGKGNDEEEMRFQEVFMEHMSNMEKRIQHILDMEANLMDTEH FQNFSTTDQRFNDILLQLSTLFSSVQGHGNAIDEISKSLISLNTTLLDLQLNIENLNGKIQENTFKQQE EISKLEERVYVNSAEIMAMKEEQVHLEQEIKGVEKVLNNITNDLRLKDWEHSQTLRNITLIQGPAGPPGE KGDRTGPTGESGPRGFPPIGPPGLKGDRAIGFPGSRGLPGYAGRPGNSGPKGQKGEKSGNTLRPVQLT DHIRAGPS TRTRPLEQKLISEEDLAANDILDYKDDDDKV
Tag:	C-Myc/DDK
Purity:	> 80% as determined by SDS-PAGE and Coomassie blue staining
Concentration:	>0.05 µg/µL as determined by microplate BCA method
Labeling Method:	Labeled with [U- ¹³ C ₆ , ¹⁵ N ₄]-L-Arginine and [U- ¹³ C ₆ , ¹⁵ N ₂]-L-Lysine
Buffer:	25 mM Tris-HCl, 100 mM glycine, pH 7.3
Storage:	Store at -80°C. Avoid repeated freeze-thaw cycles.
Stability:	Stable for 3 months from receipt of products under proper storage and handling conditions.
RefSeq:	NP_002436
RefSeq Size:	2823
RefSeq ORF:	1074
Synonyms:	CD204; phSR1; phSR2; SCARA1; SR-A; SR-AI; SR-AII; SR-AIII; SRA
Locus ID:	4481



[View online »](#)

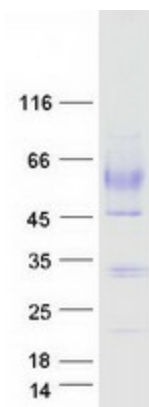
UniProt ID: [P21757](#)

Cytogenetics: 8p22

Summary: This gene encodes the class A macrophage scavenger receptors, which include three different types (1, 2, 3) generated by alternative splicing of this gene. These receptors or isoforms are macrophage-specific trimeric integral membrane glycoproteins and have been implicated in many macrophage-associated physiological and pathological processes including atherosclerosis, Alzheimer's disease, and host defense. The isoforms type 1 and type 2 are functional receptors and are able to mediate the endocytosis of modified low density lipoproteins (LDLs). The isoform type 3 does not internalize modified LDL (acetyl-LDL) despite having the domain shown to mediate this function in the types 1 and 2 isoforms. It has an altered intracellular processing and is trapped within the endoplasmic reticulum, making it unable to perform endocytosis. The isoform type 3 can inhibit the function of isoforms type 1 and type 2 when co-expressed, indicating a dominant negative effect and suggesting a mechanism for regulation of scavenger receptor activity in macrophages. [provided by RefSeq, Jul 2008]

Protein Families: Druggable Genome, Transmembrane

Product images:



Coomassie blue staining of purified MSR1 protein (Cat# [TP312931]). The protein was produced from HEK293T cells transfected with MSR1 cDNA clone (Cat# [RC212931]) using MegaTran 2.0 (Cat# [TT210002]).