

Product datasheet for PH312883

SCYL1BP1 (GORAB) (NM_152281) Human Mass Spec Standard

Product data:

Product Type:	Mass Spec Standards
Description:	GORAB MS Standard C13 and N15-labeled recombinant protein (NP_689494)
Species:	Human
Expression Host:	HEK293
Expression cDNA Clone or AA Sequence:	RC212883
Predicted MW:	44.8 kDa
Protein Sequence:	>RC212883 representing NM_152281 Red=Cloning site Green=Tags(s) MSWAAVLAVAAARFGHFVWGRWPGPMAQGWAGFSEEELRRLKQTKDPFEPQRRLLPAKKSRRQLQREKALV EQSQKLGQLQDGSTSLLEPEQLLSAPKQRVNVQKPPFSSPTLPSHFTLTSPVGDGQPQGIESQPKELGLENS HDGHNNEILPPKPDCKLEKKKVELQEKSWEVLQEQRLMEEKNKRKALLAKAIAERSKRTQAETMKL KRIQKELQALDDMVSADIGILRNRIQASLDYSYARKRFDRAEAEYIAAKLDIQRKTEIKEQLTEHLCTI IQQNELRKAKKLEELMQQLDVEADEETLELEVEVERLLHEQEVESRRPVVRLERPFQPAEESVTLEFAKE NRKCQEQA VSPKVDDQCGNSSSIPFLSPNCPNQEGNDISAALAT TRTRPLEQKLI SEEDLAANDILDYKDDDDKV
Tag:	C-Myc/DDK
Purity:	> 80% as determined by SDS-PAGE and Coomassie blue staining
Concentration:	>0.05 µg/µL as determined by microplate BCA method
Labeling Method:	Labeled with [U- ¹³ C ₆ , ¹⁵ N ₄]-L-Arginine and [U- ¹³ C ₆ , ¹⁵ N ₂]-L-Lysine
Buffer:	25 mM Tris-HCl, 100 mM glycine, pH 7.3
Storage:	Store at -80°C. Avoid repeated freeze-thaw cycles.
Stability:	Stable for 3 months from receipt of products under proper storage and handling conditions.
RefSeq:	NP_689494
RefSeq Size:	2186
RefSeq ORF:	1182
Synonyms:	GO; NTKLBP1; SCYL1BP1
Locus ID:	92344



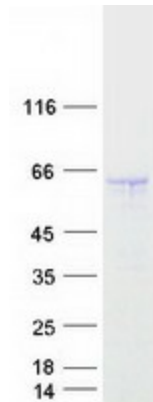
[View online »](#)

UniProt ID: [Q5T7V8](#), [B3KQ87](#)

Cytogenetics: 1q24.2

Summary: This gene encodes a member of the golgin family, a group of coiled-coil proteins localized to the Golgi. The encoded protein may function in the secretory pathway. The encoded protein, which also localizes to the cytoplasm, was identified by interactions with the N-terminal kinase-like protein, and thus it may function in mitosis. Mutations in this gene have been associated with geroderma osteodysplastica. Alternatively spliced transcript variants have been described. [provided by RefSeq, Mar 2009]

Product images:



Coomassie blue staining of purified GORAB protein (Cat# [TP312883]). The protein was produced from HEK293T cells transfected with GORAB cDNA clone (Cat# [RC212883]) using MegaTran 2.0 (Cat# [TT210002]).