

## Product datasheet for PH312858

### Parathyroid hormone related protein (PTH LH) (NM\_002820) Human Mass Spec Standard

#### Product data:

Product Type:	Mass Spec Standards
Description:	PTH LH MS Standard C13 and N15-labeled recombinant protein (NP_002811)
Species:	Human
Expression Host:	HEK293
Expression cDNA Clone or AA Sequence:	RC212858
Predicted MW:	19.9 kDa
Protein Sequence:	>RC212858 representing NM_002820 Red=Cloning site Green=Tags(s)  MQRRLLVQQWSVAVFLLSYAVPSCGRSVEGLSRRLKRAVSEHQLLHDKGKSIQDLRRRFFLHHLIAEIH TA EIRATSEVSPNSKPSNTKNHPVRFGSDDDEGRYLTQETNKVETYKEQPLKTPGKKKKGKPGKRKEQEK KK RRTRSAWLDSGVTGSGLEGDHLSDTSTTSLELDSR  TRTRPLEQKLI SEEDLAANDILDYKDDDDKV
Tag:	C-Myc/DDK
Purity:	> 80% as determined by SDS-PAGE and Coomassie blue staining
Concentration:	>0.05 µg/µL as determined by microplate BCA method
Labeling Method:	Labeled with [U- <sup>13</sup> C <sub>6</sub> , <sup>15</sup> N <sub>4</sub> ]-L-Arginine and [U- <sup>13</sup> C <sub>6</sub> , <sup>15</sup> N <sub>2</sub> ]-L-Lysine
Buffer:	25 mM Tris-HCl, 100 mM glycine, pH 7.3
Storage:	Store at -80°C. Avoid repeated freeze-thaw cycles.
Stability:	Stable for 3 months from receipt of products under proper storage and handling conditions.
RefSeq:	<a href="#">NP_002811</a>
RefSeq Size:	1881
RefSeq ORF:	525
Synonyms:	BDE2; HHM; PLP; PTHR; PTHRP
Locus ID:	5744
UniProt ID:	<a href="#">P12272</a> , <a href="#">Q53XY9</a>



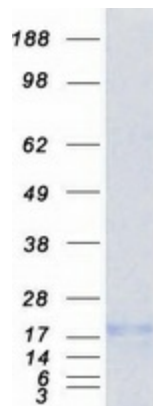
[View online »](#)

**Cytogenetics:** 12p11.22

**Summary:** The protein encoded by this gene is a member of the parathyroid hormone family. This hormone, via its receptor, PTHR1, regulates endochondral bone development and epithelial-mesenchymal interactions during the formation of the mammary glands and teeth. It is responsible for most cases of humoral hypercalcemia of malignancy, and mutations in this gene are associated with brachydactyly type E2 (BDE2). Alternatively spliced transcript variants have been found for this gene. There is also evidence for alternative translation initiation from non-AUG (CUG and GUG) start sites, downstream of the initiator AUG codon, resulting in nuclear forms of this hormone. [provided by RefSeq, Nov 2013]

**Protein Families:** Druggable Genome, Secreted Protein

### Product images:



Coomassie blue staining of purified PTH LH protein (Cat# [TP312858]). The protein was produced from HEK293T cells transfected with PTH LH cDNA clone (Cat# [RC212858]) using MegaTran 2.0 (Cat# [TT210002]).