

Product datasheet for PH312830

MEF2A (NM_005587) Human Mass Spec Standard

Product data:

Product Type:	Mass Spec Standards
Description:	MEF2A MS Standard C13 and N15-labeled recombinant protein (NP_005578)
Species:	Human
Expression Host:	HEK293
Expression cDNA Clone or AA Sequence:	RC212830
Predicted MW:	53.7 kDa
Protein Sequence:	>RC212830 representing NM_005587 Red=Cloning site Green=Tags(s)

MGRKKIQITRIMDERNRQVTFTRKRFGLMKKAYELSVLCDCEIALIIFNSSNKL FQYASTMDKVL LKYT
EYNPHE SRTNSDIVEALNKKEHRGCDSPDPDTSYVLT PHTEEKYK KINEEFDNMMRNH K IAPGLPPQNF
SMSVTVPV TSPNALSYTNPGSSLVSPSLAASSTLTDSSML SPPQTTLHRNVSPGAPQRPPSTGNAGGMLS
TTDLTVPNGAGSSPVGNGFVNSRASPNLIGATGANS LGKVMPTKSPPPPGGGNLGMNSRKPDLRVIPP S
SKGMPPPLNTQRISSSQATQPLATPVVSVTTPSLPPQGLVYSAMPTAYNTDYSLTSADLSALQGFNSPGM
LSLQVSAWQQHHLGQAALSSLVAGGQLSQGSNLSINTNQNISIKSEPI SPPDRMTPSGFQQQQQQQQ
QQPPPPPPQPQPQPQPQPRQEMGRSPVDSLSSSSSSYDGS DREDPRGDFHSPIVLGRPPNTEDRES PSVK
RMRMDAWVT

SGP TRRRLEQKLI SEEDLAANDILDYKDDDDKV

Tag:	C-Myc/DDK
Purity:	> 80% as determined by SDS-PAGE and Coomassie blue staining
Concentration:	>0.05 µg/µL as determined by microplate BCA method
Labeling Method:	Labeled with [U- ¹³ C ₆ , ¹⁵ N ₄]-L-Arginine and [U- ¹³ C ₆ , ¹⁵ N ₂]-L-Lysine
Buffer:	25 mM Tris-HCl, 100 mM glycine, pH 7.3
Storage:	Store at -80°C. Avoid repeated freeze-thaw cycles.
Stability:	Stable for 3 months from receipt of products under proper storage and handling conditions.
RefSeq:	<u>NP_005578</u>
RefSeq Size:	2975
RefSeq ORF:	1497



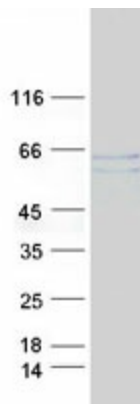
[View online »](#)

Synonyms: ADCAD1; mef2; RSRFC4; RSRFC9
Locus ID: 4205
UniProt ID: [Q02078](#), [A0A0S2Z4N0](#), [A0A0S2Z454](#)
Cytogenetics: 15q26.3

Summary: The protein encoded by this gene is a DNA-binding transcription factor that activates many muscle-specific, growth factor-induced, and stress-induced genes. The encoded protein can act as a homodimer or as a heterodimer and is involved in several cellular processes, including muscle development, neuronal differentiation, cell growth control, and apoptosis. Defects in this gene could be a cause of autosomal dominant coronary artery disease 1 with myocardial infarction (ADCAD1). Several transcript variants encoding different isoforms have been found for this gene.[provided by RefSeq, Jan 2010]

Protein Families: Transcription Factors

Product images:



Coomassie blue staining of purified MEF2A protein (Cat# [TP312830]). The protein was produced from HEK293T cells transfected with MEF2A cDNA clone (Cat# [RC212830]) using MegaTran 2.0 (Cat# [TT210002]).