

Product datasheet for PH312768

METTL1 (NM_005371) Human Mass Spec Standard

Product data:

Product Type:	Mass Spec Standards
Description:	METTL1 MS Standard C13 and N15-labeled recombinant protein (NP_005362)
Species:	Human
Expression Host:	HEK293
Expression cDNA Clone or AA Sequence:	RC212768
Predicted MW:	31.3 kDa
Protein Sequence:	>RC212768 representing NM_005371 Red=Cloning site Green=Tags(s) MAAETRNVAGAEAPPPQKRYRQRAHSNPMADHTLRYPVKPEEMDWSELYPEFFAPLTQNSHDDPKDKK EKRAQAQVEFADIGCGYGLLVELSPLFPDTLILGLEIRVKVSDYVQDRIRALRAAPAGGFQNIACLRSN AMKHLPNFFYKQQLTKMFFLFPDPHFKRTKHKWRIISPTLLAEYAYVLRVGGLVYITDVLLELHDMCTH FEEHPLFERVPLEDLSEDPVVGHLGTSTEEGKKVLRNGGKNFPAIFRIQDPVLQAVTSQTSPLPGH TRTRPLEQKLI SEEDLAANDILDYKDDDDKV
Tag:	C-Myc/DDK
Purity:	> 80% as determined by SDS-PAGE and Coomassie blue staining
Concentration:	>0.05 µg/µL as determined by microplate BCA method
Labeling Method:	Labeled with [U- ¹³ C ₆ , ¹⁵ N ₄]-L-Arginine and [U- ¹³ C ₆ , ¹⁵ N ₂]-L-Lysine
Buffer:	25 mM Tris-HCl, 100 mM glycine, pH 7.3
Storage:	Store at -80°C. Avoid repeated freeze-thaw cycles.
Stability:	Stable for 3 months from receipt of products under proper storage and handling conditions.
RefSeq:	NP_005362
RefSeq Size:	1743
RefSeq ORF:	828
Synonyms:	C12orf1; TRM8; TRMT8; YDL201w
Locus ID:	4234
UniProt ID:	Q9UBP6



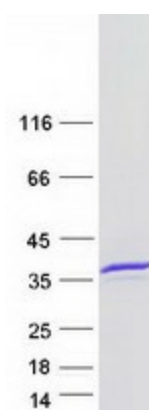
[View online »](#)

Cytogenetics: 12q14.1

Summary: This gene is similar in sequence to the *S. cerevisiae* YDL201w gene. The gene product contains a conserved S-adenosylmethionine-binding motif and is inactivated by phosphorylation. Alternative splice variants encoding different protein isoforms have been described for this gene. A pseudogene has been identified on chromosome X. [provided by RefSeq, Jul 2008]

Protein Families: Druggable Genome

Product images:



Coomassie blue staining of purified METTL1 protein (Cat# [TP312768]). The protein was produced from HEK293T cells transfected with METTL1 cDNA clone (Cat# [RC212768]) using MegaTran 2.0 (Cat# [TT210002]).