

Product datasheet for PH312742

CORIN (NM_006587) Human Mass Spec Standard

Product data:

Product Type:	Mass Spec Standards
Description:	CORIN MS Standard C13 and N15-labeled recombinant protein (NP_006578)
Species:	Human
Expression Host:	HEK293
Expression cDNA Clone or AA Sequence:	RC212742
Predicted MW:	116.3 kDa
Protein Sequence:	>RC212742 representing NM_006587 Red=Cloning site Green=Tags(s)

MKQSPALAPEERCRRAGSPKPVLRADDNMGNGCSQKLATANLLRFLLLVLIPICALVLLLVIILLSYVG
TLQKVYFKSNGSEPLVTGEIQGSDVILNTIYNQSTVVSTAHPDQHPVAWTTDASLPGDQSHRNTSACM
NITHSQCMLPYHATLTPLLSVVRNMEMEKFLKFFTYLHRLSCYQHIMLFGCTLAFPECIIDGDDSHGLL
PCRSFCEAAKEGCESVLGMVNSWPDFLRCSQFRNQTESNVSRICTFSPQQENGKQLLCGRGENFLCASG
ICIPGKLQCNQYNDCCDDWSDEAHCNCSENLFHCHTGKCLNYSLVCDGYDDCGDLSDQNCDCNPTTEHRC
GDGRCIAMEWVCDGDHDCVDKSDEVNCSCHSQGLVECRNGQCIPSTFQCDGDEDCKDGSDEENCSVIQTS
CQEGDQRCLYNPCLDSCGGSSLCDPNNLSNCSQCEPITILECMNLPYNSTSYPNYFGHRTQKEASISWE
SSLFPALVQTNCKYLMFFSCTILVPKCDVNTGEHIIPCCRALCEHSKERCESVLGIVGLQWPEDTDCSQF
PEENSDNQTCMLPDEYVEECSPSHFKCRSGQCVLASRRCDGQADCCDDSDDEENCGCKERDLWECPSNKQC
LKHTVICDGFPCPDYMEKNCFSFCQDDELECANHACVSRDLWCDGEADCSDSSDEWDCVTLSINVNSSS
FLMVHRAATEHHVCADGWQEILSQLACKQMGLEGPSVTKLIQEKEPRWLTLSHNWESLNGTTLHELLV
NGQSCESRSKISLLCTKQDCGRRPAARMNKRIILGGRTSRPGRWPQCSLQSEPSGHICGCVLIAKKWLT
VAHCFEGRENAAVKVVLGINNLDHPSVFMQTRFVKTIILHPRYSRAVVDYDISIVELSEDISETGYVRP
VCLPNPEQWLEPDTYCYITGWGHMGNKMPFKLQEGEVRIISLEHCQSYFDMKTIITRMICAGYESGTVDS
CMGDSGGPLVCEKPGGRWTLFGLTSWGSVCFKVLGPGVYSNVSFVVEWIKRQIYIQTFLLN

TRTRPLEQKLISEEDLAANDILDYKDDDDKV

Tag:	C-Myc/DDK
Purity:	> 80% as determined by SDS-PAGE and Coomassie blue staining
Concentration:	>0.05 µg/µL as determined by microplate BCA method
Labeling Method:	Labeled with [U- ¹³ C ₆ , ¹⁵ N ₄]-L-Arginine and [U- ¹³ C ₆ , ¹⁵ N ₂]-L-Lysine
Buffer:	25 mM Tris-HCl, 100 mM glycine, pH 7.3
Storage:	Store at -80°C. Avoid repeated freeze-thaw cycles.



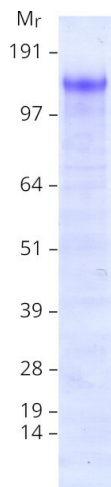
[View online »](#)

Stability:	Stable for 3 months from receipt of products under proper storage and handling conditions.
RefSeq:	NP_006578
RefSeq Size:	4942
RefSeq ORF:	3126
Synonyms:	ATC2; CRN; Lrp4; PEE5; TMPRSS10
Locus ID:	10699
UniProt ID:	Q9Y5Q5 , B4E2W9
Cytogenetics:	4p12

Summary: This gene encodes a member of the type II transmembrane serine protease class of the trypsin superfamily. Members of this family are composed of multiple structurally distinct domains. The encoded protein converts pro-atrial natriuretic peptide to biologically active atrial natriuretic peptide, a cardiac hormone that regulates blood volume and pressure. This protein may also function as a pro-brain-type natriuretic peptide convertase. Multiple alternatively spliced transcript variants encoding different isoforms have been found for this gene. [provided by RefSeq, Jun 2013]

Protein Families: Druggable Genome, Protease, Transmembrane

Product images:



Coomassie blue staining of purified CORIN protein (Cat# [TP312742]). The protein was produced from HEK293T cells transfected with CORIN cDNA clone (Cat# [RC212742]) using MegaTran 2.0 (Cat# [TT210002]).