

Product datasheet for PH312733

Nebulette (NEBL) (NM_213569) Human Mass Spec Standard

Product data:

| | |
|---------------------------------------|---|
| Product Type: | Mass Spec Standards |
| Description: | NEBL MS Standard C13 and N15-labeled recombinant protein (NP_998734) |
| Species: | Human |
| Expression Host: | HEK293 |
| Expression cDNA Clone or AA Sequence: | RC212733 |
| Predicted MW: | 31 kDa |
| Protein Sequence: | >RC212733 representing NM_213569 Red=Cloning site Green=Tags(s) MNPQCARCGKVVPTEKVNCLDKYWHKGCFCHEVCKMALNMNYYKGYEKKPYCNAHYPKQSFTTVADTPE NLRLKQSQSELQSQVKYKRDFFESKGRGFSIVTDTPELQRLKRTQEQISNVKYHEDFEKTKGRGFTPVVDD PVTERVRKNTQVVSDAAYKGVHPHIVEMDRRPGIIVAPVLPGAYQQSHSQGYGYMHQTSVSSMRSMQHSP NLRTYRAMYDYSAQDEDEVSRDGDYIVNVQPIIDGWMYGTVQRTGRTGMLPANYIEFVN TRTRPLEQKLI SEEDLAANDILDYKDDDDKV |
| Tag: | C-Myc/DDK |
| Purity: | > 80% as determined by SDS-PAGE and Coomassie blue staining |
| Concentration: | >0.05 µg/µL as determined by microplate BCA method |
| Labeling Method: | Labeled with [U- ¹³ C ₆ , ¹⁵ N ₄]-L-Arginine and [U- ¹³ C ₆ , ¹⁵ N ₂]-L-Lysine |
| Buffer: | 25 mM Tris-HCl, 100 mM glycine, pH 7.3 |
| Storage: | Store at -80°C. Avoid repeated freeze-thaw cycles. |
| Stability: | Stable for 3 months from receipt of products under proper storage and handling conditions. |
| RefSeq: | NP_998734 |
| RefSeq Size: | 1245 |
| RefSeq ORF: | 810 |
| Synonyms: | bA165O3.1; C10orf113; LASP2; LNEBL |
| Locus ID: | 10529 |
| UniProt ID: | O76041 , Q59FZ8 |

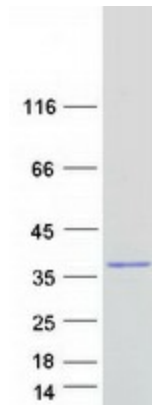


[View online »](#)

Cytogenetics: 10p12.31

Summary: This gene encodes a nebulin like protein that is abundantly expressed in cardiac muscle. The encoded protein binds actin and interacts with thin filaments and Z-line associated proteins in striated muscle. This protein may be involved in cardiac myofibril assembly. A shorter isoform of this protein termed LIM nebullette is expressed in non-muscle cells and may function as a component of focal adhesion complexes. Alternate splicing results in multiple transcript variants. [provided by RefSeq, Mar 2010]

Product images:



Coomassie blue staining of purified NEBL protein (Cat# [TP312733]). The protein was produced from HEK293T cells transfected with NEBL cDNA clone (Cat# [RC212733]) using MegaTran 2.0 (Cat# [TT210002]).