

## Product datasheet for PH312716

### CR16 (WIPF3) (NM\_001080529) Human Mass Spec Standard

#### Product data:

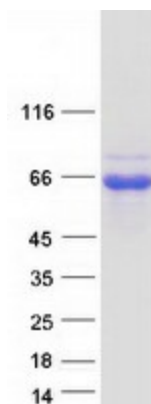
Product Type:	Mass Spec Standards
Description:	WIPF3 MS Standard C13 and N15-labeled recombinant protein (NP_001073998)
Species:	Human
Expression Host:	HEK293
Expression cDNA Clone or AA Sequence:	RC212716
Predicted MW:	49.2 kDa
Protein Sequence:	>RC212716 representing NM_001080529 Red=Cloning site Green=Tags(s)  MPVPPPPPPPLPPPPPLGAPPPPPSAPPVSTDTSSLRRADPKGRSALLADIQQGTRLRKVTQINDRSA PQIESSKGTNKEGGGSANTRGASTPPTLGDLFAGGFVLRPAGQRDVAGGKTGQGPGRAPSPRLPNKTI SGPLIPPASPRLGNTSEAHGAARTAPPRPNVPAPPPTPPPPPPPLPPPLSSSPIKTPLVSPGPLTKG NLPVVAPPVPCAPPPPPPPPTPPPLPASVLSKAVKQLAPLHLPPIPPPLLLPPCGYPGLKAEPA SPAQDAQEPPAPPPLPPYASCSPRASLPAPPLPGVNSSSETPPPLPPKSPSFQAPPQKAGAQUALPAPPA PPGSQPFLQKKRHGRPGAGGGKLNPPAPPARSPTTELSSKSQQATAWPTQQPGGQLRNGSLHIIDDFE SKFTFHSVEDFPDPDEYKPCQKIYPSKIPRSRTPGPWLQAEAVGQSSDDIKGRNSQVTQASCL  TRTRPLEQKLISEEDLAANDILDYKDDDDKV
Tag:	C-Myc/DDK
Purity:	> 80% as determined by SDS-PAGE and Coomassie blue staining
Concentration:	>0.05 µg/µL as determined by microplate BCA method
Labeling Method:	Labeled with [U- 13C6, 15N4]-L-Arginine and [U- 13C6, 15N2]-L-Lysine
Buffer:	25 mM Tris-HCl, 100 mM glycine, pH 7.3
Storage:	Store at -80°C. Avoid repeated freeze-thaw cycles.
Stability:	Stable for 3 months from receipt of products under proper storage and handling conditions.
RefSeq:	<u>NP_001073998</u>
RefSeq Size:	3241
RefSeq ORF:	1449
Synonyms:	CR16



[View online »](#)

Locus ID:	644150
UniProt ID:	<a href="#">A6NGB9</a>
Cytogenetics:	7p14.3
Summary:	May be a regulator of cytoskeletal organization. May have a role in spermatogenesis (By similarity).[UniProtKB/Swiss-Prot Function]

### Product images:



Coomassie blue staining of purified WIPF3 protein (Cat# [TP312716]). The protein was produced from HEK293T cells transfected with WIPF3 cDNA clone (Cat# [RC212716]) using MegaTran 2.0 (Cat# [TT210002]).