

Product datasheet for PH312653

Acid Phosphatase (ACP1) (NM_004300) Human Mass Spec Standard

Product data:

Product Type:	Mass Spec Standards
Description:	ACP1 MS Standard C13 and N15-labeled recombinant protein (NP_004291)
Species:	Human
Expression Host:	HEK293
Expression cDNA Clone or AA Sequence:	RC212653
Predicted MW:	17.9 kDa
Protein Sequence:	>RC212653 representing NM_004300 Red =Cloning site Green =Tags(s) MAEQATKSVL FVCLGNICRSPIAEAVFRKLVTDQNI SENWRVDSAATSGYEIGNPPDYRGQSCMKRHGIP MSHVARQITKEDFATFDYILCMDES NLRDLNRKSNRVKTKAKIELLGSYDPQKQLIIEDPYGNDSDFE TVYQQCVRCCRAFLEKAH TR TRP LEQKLI SEEDLA ANDILDYK DDDDKV
Tag:	C-Myc/DDK
Purity:	> 80% as determined by SDS-PAGE and Coomassie blue staining
Concentration:	>0.05 µg/µL as determined by microplate BCA method
Labeling Method:	Labeled with [U- ¹³ C ₆ , ¹⁵ N ₄]-L-Arginine and [U- ¹³ C ₆ , ¹⁵ N ₂]-L-Lysine
Buffer:	25 mM Tris-HCl, 100 mM glycine, pH 7.3
Storage:	Store at -80°C. Avoid repeated freeze-thaw cycles.
Stability:	Stable for 3 months from receipt of products under proper storage and handling conditions.
RefSeq:	NP_004291
RefSeq Size:	1549
RefSeq ORF:	474
Synonyms:	HAAP; LMW-PTP; LMWPTP
Locus ID:	52
UniProt ID:	P24666 , Q59EH3



[View online »](#)

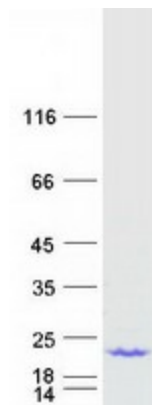
Cytogenetics: 2p25.3

Summary: The product of this gene belongs to the phosphotyrosine protein phosphatase family of proteins. It functions as an acid phosphatase and a protein tyrosine phosphatase by hydrolyzing protein tyrosine phosphate to protein tyrosine and orthophosphate. This enzyme also hydrolyzes orthophosphoric monoesters to alcohol and orthophosphate. This gene is genetically polymorphic, and three common alleles segregating at the corresponding locus give rise to six phenotypes. Each allele appears to encode at least two electrophoretically different isozymes, Bf and Bs, which are produced in allele-specific ratios. Multiple alternatively spliced transcript variants encoding distinct isoforms have been identified for this gene. [provided by RefSeq, Aug 2008]

Protein Families: Druggable Genome, Phosphatase, Transmembrane

Protein Pathways: Adherens junction, Riboflavin metabolism

Product images:



Coomassie blue staining of purified ACP1 protein (Cat# [TP312653]). The protein was produced from HEK293T cells transfected with ACP1 cDNA clone (Cat# [RC212653]) using MegaTran 2.0 (Cat# [TT210002]).