

## Product datasheet for PH312646

### Nicastrin (NCSTN) (NM\_015331) Human Mass Spec Standard

#### Product data:

Product Type:	Mass Spec Standards
Description:	NCSTN MS Standard C13 and N15-labeled recombinant protein (NP_056146)
Species:	Human
Expression Host:	HEK293
Expression cDNA Clone or AA Sequence:	RC212646
Predicted MW:	78.41 kDa
Protein Sequence:	>RC212646 representing NM_015331 Red=Cloning site Green=Tags(s)

MATAGGSGADPGSRGLLRLLSFCVLLAGLCRGNVERKIYIPLNKTAPCVRLLNATHQIGCQSSISGDT  
GVIHVVEKEEDLQWVLTGPNPPYMLLESKHFRDLMKLGRTSRIAGLAVSLTKPSPASGFSPSVQC  
PNDGFGVYSNSYGPEFAHCREIQWNSLGNGLAYEDFSFPIFLLEDENETKVIKQCYQDHNSQNGSAPT  
PLCAMQLFSMHAVISTATCMRRSSIQSTFSINPEIVCDPLSDYNVWSMLKPINTTGTLKPDDEVVAAT  
RLDSRSFFWNVAPGAESAVASFVTQLAAAEALQKAPDVTTLPRNVMFVFFQGETFDYIGSSRMVYDMEKG  
KFPVQLENVDSFVELGQVALRTSLELWMHTDPVSQKNESVRNQVEDLLATLEKSGAGVPAVILRRPNQSQ  
PLPPSSLQRFLRARNISGVVLADHSGAFHNKYYQSIYDTAENINVSYPEWLSPEEDLNFTDTAKALADV  
ATVLRALYELAGGTNFSDTVQADPQTVTRLLYGFLIKANNSWFQSILRQDLRSYLDGQPLQHYIAVSSP  
TNTTYVVQYALANLTGTVVNLTRQCQDPKVPSENKDLYEYSWVQGPLHSNETDRLPRCVRSTARLARA  
LSPAFELSQWSSTEYSTWTESRWKDIRARIFLIASKELELITLTVGFILIFSLIVTYCINAKADVLFIA  
PREPGAVSY

TRTRPLEQKLISEEDLAANDILDYKDDDDKV

Tag:	C-Myc/DDK
Purity:	> 80% as determined by SDS-PAGE and Coomassie blue staining
Concentration:	>0.05 µg/µL as determined by microplate BCA method
Labeling Method:	Labeled with [U- <sup>13</sup> C <sub>6</sub> , <sup>15</sup> N <sub>4</sub> ]-L-Arginine and [U- <sup>13</sup> C <sub>6</sub> , <sup>15</sup> N <sub>2</sub> ]-L-Lysine
Buffer:	25 mM Tris-HCl, 100 mM glycine, pH 7.3
Storage:	Store at -80°C. Avoid repeated freeze-thaw cycles.
Stability:	Stable for 3 months from receipt of products under proper storage and handling conditions.
RefSeq:	<a href="#">NP_056146</a>



[View online »](#)

RefSeq Size:	2944
RefSeq ORF:	2127
Synonyms:	ATAG1874
Locus ID:	23385
UniProt ID:	<a href="#">Q92542</a>
Cytogenetics:	1q23.2

**Summary:**

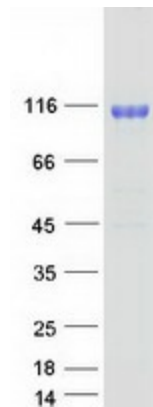
This gene encodes a type I transmembrane glycoprotein that is an integral component of the multimeric gamma-secretase complex. The encoded protein cleaves integral membrane proteins, including Notch receptors and beta-amyloid precursor protein, and may be a stabilizing cofactor required for gamma-secretase complex assembly. The cleavage of beta-amyloid precursor protein yields amyloid beta peptide, the main component of the neuritic plaque and the hallmark lesion in the brains of patients with Alzheimer's disease; however, the nature of the encoded protein's role in Alzheimer's disease is not known for certain. Mutations in this gene are associated with familial acne inversa. A pseudogene of this gene is present on chromosome 21. Alternatively spliced transcript variants of this gene have been described, but the full-length nature of some of these variants has not been determined. [provided by RefSeq, Feb 2014]

**Protein Families:**

Druggable Genome, Transmembrane

**Protein Pathways:**

Alzheimer's disease, Notch signaling pathway

**Product images:**

Coomassie blue staining of purified NCSTN protein (Cat# [TP312646]). The protein was produced from HEK293T cells transfected with NCSTN cDNA clone (Cat# [RC212646]) using MegaTran 2.0 (Cat# [TT210002]).