

Product datasheet for PH312627

POF1B (NM_024921) Human Mass Spec Standard

Product data:

Product Type:	Mass Spec Standards
Description:	POF1B MS Standard C13 and N15-labeled recombinant protein (NP_079197)
Species:	Human
Expression Host:	HEK293
Expression cDNA Clone or AA Sequence:	RC212627
Predicted MW:	67.9 kDa
Protein Sequence:	>RC212627 representing NM_024921 Red =Cloning site Green =Tags(s)

MSSSYWSETSSSSCGTQQLPQVLCQCPQHYHCYHQSSQAQPPPEKNVYERVRTYSGPMNKVVQALDPFN
 SREVLSPKTTSSYQNLVWSDHSQELHSPCLKISTCAPSTLHITQNTQELHSPVVKLTTPQTIRKYV
 VQNPEQEPLSQFLRGSHFFPGNNVIYEKIRKVEKLNTDQGCHPQAQCHHHIIQQPQVIHSAHWQPDSS
 QQIQAITGNNPISTHIGNELCHSGSSQICEQVIIQDDGPEKLDPRYFGELLADLSRKNTDLYHCLLEHLQ
 RIGGSKQDFESTDESEDIESLIPKGLSEFTKQQIRYILQMRGMSDKSLRLVLTFSNIREELGHLQNDLT
 SLENDKMRLEKDLSEKDTQLKEYEELLASVRANHHQQQQGLQDSSSKCQALEENNLRLHTLSMEYRLK
 ELEYCKRNLEQENQLRMQVSETCTGPMLQAKMDEIGNHYTEMVKNLRMEKDREICRLRSQNLNQYHKDVS
 KREGSCSDFQFKLHELTSLLLEKDSLKRQSEELSKLRQEYSSHNQPSGGRTTITTKYRTQYPILGL
 LYDDYIYPPGSETQTIVIEKTEKDYTCP

TRTRPLEEQKLISEEDLANDILDYKDDDDKV

Tag:	C-Myc/DDK
Purity:	> 80% as determined by SDS-PAGE and Coomassie blue staining
Concentration:	>0.05 µg/µL as determined by microplate BCA method
Labeling Method:	Labeled with [U- ¹³ C ₆ , ¹⁵ N ₄]-L-Arginine and [U- ¹³ C ₆ , ¹⁵ N ₂]-L-Lysine
Buffer:	25 mM Tris-HCl, 100 mM glycine, pH 7.3
Storage:	Store at -80°C. Avoid repeated freeze-thaw cycles.
Stability:	Stable for 3 months from receipt of products under proper storage and handling conditions.
RefSeq:	NP_079197
RefSeq Size:	3942
RefSeq ORF:	1767


[View online »](#)

Synonyms: POF; POF2B

Locus ID: 79983

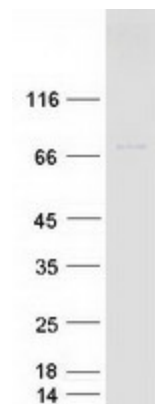
UniProt ID: [Q8WVV4](#)

Cytogenetics: Xq21.1

Summary:

Premature ovarian failure (POF) is characterized by primary or secondary amenorrhea in women less than 40 years old. Two POF susceptibility regions called "POF1" and "POF2" have been identified by breakpoint mapping of X-autosome translocations. POF1 extends from Xq21-qter while POF2 extends from Xq13.3 to Xq21.1. This gene, POF1B, resides in the POF2 region. This gene is expressed at trace levels in mouse prenatal ovary and is barely detectable or absent from adult ovary, in human and in the mouse respectively. This gene's expression is restricted to epithelia with its highest expression in the epidermis, and oro-pharyngeal and gastro-intestinal tracts. The protein encoded by this gene binds non-muscle actin filaments. The role this gene may play in the etiology of premature ovarian failure remains to be determined. [provided by RefSeq, Jan 2010]

Product images:



Coomassie blue staining of purified POF1B protein (Cat# [TP312627]). The protein was produced from HEK293T cells transfected with POF1B cDNA clone (Cat# [RC212627]) using MegaTran 2.0 (Cat# [TT210002]).