

Product datasheet for PH312621

KLHL14 (NM_020805) Human Mass Spec Standard

Product data:

Product Type:	Mass Spec Standards
Description:	KLHL14 MS Standard C13 and N15-labeled recombinant protein (NP_065856)
Species:	Human
Expression Host:	HEK293
Expression cDNA Clone or AA Sequence:	RC212621
Predicted MW:	70.5 kDa
Protein Sequence:	>RC212621 representing NM_020805 Red=Cloning site Green=Tags(s)

MSRSGDRTSTFDPSHSDNLLHGLNLLWRKQLFCDVTLTAQGQQFHCHKAVLASCSQYFRSLFSSHPPLGG
GVGGQDGLGAPKDQQPPQQPSQQQPPPPQEEPGTPSSSPDDKLLTSPRAINNLVLQGCSSIGLRLVLE
YLYTANVTLSLDTVEEVLSVSKILHIPQVTKLCVQFLNDQISVQNYKQVCKIAALHGLEETKKLANKYL
EDVLLNFEEMRALLDSLPPVESELALFQMSVLWLEHDRETRMRYAPDLMKRLRFALIPAPELVERVQS
VDFMRTDVPVCQKLLLDAMNYHLMFPRQHCROSLASRIRSNKKMLLLVGGLPPGPDRLPNSLVQYYDDEKK
TWKILTIMPYNSAHHCVVEVENFLFVLGGEDQWNPNGKHSTNFVSRYPFRNSWIQLPPMQERRASFYAC
RLDKHLVYIGGRNETGYLSSVECYNLETNEWRYVSSLPQPLAAHAGAVHNGKIYISGGVHNGEYVPWLYC
YDPVMDVWARKQDMNTKRAIHTLAVMNDRLYAIGGNHLKGFSHLDVMLVECYDPKGDQWNILQTPILEGR
SGPGCAVLDDSIYLVGGYSWSMGAYKSSTICYCPEKGTWTELEGDVAEPLAGPACVTVILPSCVPYNK

TRTRPLEQKLISEEDLAANDILDYKDDDDKV

Tag:	C-Myc/DDK
Purity:	> 80% as determined by SDS-PAGE and Coomassie blue staining
Concentration:	>0.05 µg/µL as determined by microplate BCA method
Labeling Method:	Labeled with [U- ¹³ C ₆ , ¹⁵ N ₄]-L-Arginine and [U- ¹³ C ₆ , ¹⁵ N ₂]-L-Lysine
Buffer:	25 mM Tris-HCl, 100 mM glycine, pH 7.3
Storage:	Store at -80°C. Avoid repeated freeze-thaw cycles.
Stability:	Stable for 3 months from receipt of products under proper storage and handling conditions.
RefSeq:	NP_065856
RefSeq Size:	4261
RefSeq ORF:	1884



[View online »](#)

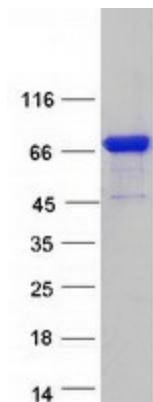
Locus ID: 57565

UniProt ID: [Q9P2G3](#)

Cytogenetics: 18q12.1

Summary: The protein encoded by this gene is a member of the Kelch-like gene family, whose members contain a BTB/POZ domain, a BACK domain, and several Kelch domains. The encoded protein possesses six Kelch domains and localizes to the endoplasmic reticulum, where it interacts with torsin-1A. [provided by RefSeq, Sep 2015]

Product images:



Coomassie blue staining of purified KLHL14 protein (Cat# [TP312621]). The protein was produced from HEK293T cells transfected with KLHL14 cDNA clone (Cat# [RC212621]) using MegaTran 2.0 (Cat# [TT210002]).