

Product datasheet for PH312526

PCLKC (CDHR2) (NM_017675) Human Mass Spec Standard

Product data:

Product Type:	Mass Spec Standards
Description:	CDHR2 MS Standard C13 and N15-labeled recombinant protein (NP_060145)
Species:	Human
Expression Host:	HEK293
Expression cDNA Clone or AA Sequence:	RC212526
Predicted MW:	141.4 kDa
Protein Sequence:	>RC212526 representing NM_017675 Red=Cloning site Green=Tags(s)

MAQLWLSFCFLPALVVSVAANVAPKFLANMTSVILPEDLPVGAQAFWLVAEDQDNDPLTYGMSGPNAYFF
AVTPKTGEVKLASALDYETLYTFKVTISVSDPYIQVQREMLVIVEDRNDNAPVFQNTAFSTINETLPVG
SVVFSVLAVDKDMGSAGMVVYSIEKVIPSTGDSEHLFRILANGSIVLNGSLSYNNKSAFYQLELKACDLG
GMYHNTFTIQCSLPVFLSISVVDQPDLPQFVREFYSASVAEDAAGKTSVLTVEAVDGDGKINDPVIYSI
SYSTRPGWFDIGADGVIRVNGSLDREQLLEADEEVQLQVTATETHLNIYGQEAKVISIWTVRVMDVNDHK
PEFYNCSLPACTFTPEEAQVNF TGYVDEHASPRIPIDDL TMVVYDPDKGSNGTFLLSLGGPDAEAF SVSP
ERAAGSASVQVL VRSALVDYERQTAMAVQVVATDSVSNF SVAMVTIHLRDINDHRPTFPQSL YVLTVP
EHSATGSVVTDSIHATDPDTGAWGQITYSLLPGNGADLFQVDPVSGT VTVRNGELLDRESQAVYYLTLQA
TDGGNLSSTTLQIHLLDINDNAPVVS GSYNIFVQEEGNVSVTIQAHDNDEPGTNNRLLFNLLPGPYS
HNFSLDPDTGLLRNLGPLDREAIDPALEGRIVLTVLVSDCGEVLGTVKVVNTITVEDINDNLP IFNQSSY
NFTVKEEDPGVL VGVVKAWDADQTEANNRISFSLSGSGANYFMIRGLVLGAGWAEGLRLLPPDVSLDYET
QPVFNLTVSAENPDPQGGETIVDVCVNVKDVNDNPPTLDVASLRGIRVAENGSQHGGQAVVVASDVTSA
QLEIQLVNI LCTKAGVDVGLCWGWF SVAANGSVYINQSKAIDYEACDLVTLVVRACDLATDPGFQAYSN
NGSLLITIEDVNDNAPYFLPENKTFVIIPELVLPNREVASVRARDDSGNNGVILFSILRVDFISKDGT
IPFQGVFSIFTSSEADV FAGSIQPVTSLDSTLQGT YQVTQARDRPSLGPFL EATTTLNLFTVDQSYRSR
LQFSTPKEEVGANRQAINAAL TQATRTTVYIVDIQDIDSAARARPHSYLDAYFVFPNGSAL TLDEL SVMI
RNDQDSL TQLLQLGLVVLGSQESQESDL SKQLISVIIGLGVALLLV L VIMTMAFVCRKSYNRKLQAMKA
AKEARKTAAGVMP SAPIPGTNMYNTERANPMLNLPNKDLGLEYLSPSNDLDSVSNLDDNSVDV DKNS
QEIKEHRPHTPPEPDPEPLSVLLGRQAGASQLEGPSYTNAGLDTTDL

TRTRPLEQKLI SEEDLAANDILDYKDDDDKV

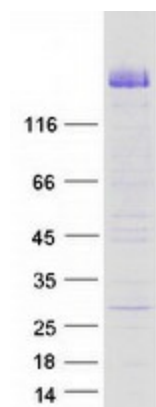
Tag:	C-Myc/DDK
Purity:	> 80% as determined by SDS-PAGE and Coomassie blue staining
Concentration:	>0.05 µg/µL as determined by microplate BCA method



[View online »](#)

Labeling Method:	Labeled with [U- ¹³ C ₆ , ¹⁵ N ₄]-L-Arginine and [U- ¹³ C ₆ , ¹⁵ N ₂]-L-Lysine
Buffer:	25 mM Tris-HCl, 100 mM glycine, pH 7.3
Storage:	Store at -80°C. Avoid repeated freeze-thaw cycles.
Stability:	Stable for 3 months from receipt of products under proper storage and handling conditions.
RefSeq:	NP_060145
RefSeq Size:	4116
RefSeq ORF:	3930
Synonyms:	PCDH24; PCLKC
Locus ID:	54825
UniProt ID:	Q9BYE9
Cytogenetics:	5q35.2
Summary:	This gene is a member of the protocadherin family, which represents a subset of the larger cadherin superfamily. The members of the protocadherin family encode non-classical cadherins that function as calcium-dependent cell-cell adhesion molecules. This protocadherin represents a new candidate for tumor suppression. Alternatively spliced transcript variants that encode the same protein have been identified. [provided by RefSeq, Jan 2010]
Protein Families:	Transmembrane

Product images:



Coomassie blue staining of purified CDHR2 protein (Cat# [TP312526]). The protein was produced from HEK293T cells transfected with CDHR2 cDNA clone (Cat# [RC212526]) using MegaTran 2.0 (Cat# [TT210002]).