

Product datasheet for PH312522

GDPGP1 (NM_001013657) Human Mass Spec Standard

Product data:

Product Type:	Mass Spec Standards
Description:	C15orf58 MS Standard C13 and N15-labeled recombinant protein (NP_001013679)
Species:	Human
Expression Host:	HEK293
Expression cDNA Clone or AA Sequence:	RC212522
Predicted MW:	42.2 kDa
Protein Sequence:	>RC212522 representing NM_001013657 Red=Cloning site Green=Tags(s)
	MALPHDSNETSYLLPPNNEDWGRQTIPDFVYGQKDLMAEGIQWPRNAPGIPDALPQSPFDAALCSAWKQR VELGLFRYRLRELQTQILPGAVGFVAQLNVERGVQRRPPQTIKSVRQAFDPVQFNFNKIRPGEVLFRLHR EPDLPGTLLQEDILVVINVSPLEWGHVLLVPEPARQLPQRLPGALRAGIEAVLLSLHPGFRVGFNSLGG LASVNLHLHGHYLAHRLPVEQAPSEPLDPGGHLHLLQDLPAPGFLFYTRGPGPDLESLISRVCRAFDYL TDHEIAHNLVTRGAPPKGTSPSSALTGVRVILWARKSSFGIKDGAEFNVALCELAGHLPVKTSQDFSSL TEAAVAALIQDCRLPPSQAEDVQAALVALMSQEEQ
	TRTRPLEQKLI SEEDLAANDILDYKDDDDKV
Tag:	C-Myc/DDK
Purity:	> 80% as determined by SDS-PAGE and Coomassie blue staining
Concentration:	>0.05 µg/µL as determined by microplate BCA method
Labeling Method:	Labeled with [U- ¹³ C ₆ , ¹⁵ N ₄]-L-Arginine and [U- ¹³ C ₆ , ¹⁵ N ₂]-L-Lysine
Buffer:	25 mM Tris-HCl, 100 mM glycine, pH 7.3
Storage:	Store at -80°C. Avoid repeated freeze-thaw cycles.
Stability:	Stable for 3 months from receipt of products under proper storage and handling conditions.
RefSeq:	<u>NP_001013679</u>
RefSeq Size:	1940
RefSeq ORF:	1155
Synonyms:	C15orf58; VTC2
Locus ID:	390637



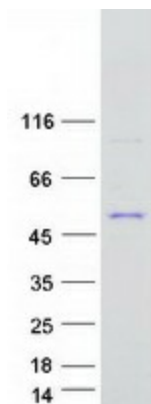
[View online »](#)

UniProt ID: [Q6ZNW5](#), [A0A024RC68](#)

Cytogenetics: 15q26.1

Summary: Specific and highly efficient GDP-D-glucose phosphorylase regulating the levels of GDP-D-glucose in cells.[UniProtKB/Swiss-Prot Function]

Product images:



Coomassie blue staining of purified GDPGP1 protein (Cat# [TP312522]). The protein was produced from HEK293T cells transfected with GDPGP1 cDNA clone (Cat# [RC212522]) using MegaTran 2.0 (Cat# [TT210002]).