

## Product datasheet for PH312499

### FGL1 (NM\_004467) Human Mass Spec Standard

#### Product data:

Product Type:	Mass Spec Standards
Description:	FGL1 MS Standard C13 and N15-labeled recombinant protein (NP_004458)
Species:	Human
Expression Host:	HEK293
Expression cDNA Clone or AA Sequence:	RC212499
Predicted MW:	36.4 kDa
Protein Sequence:	>RC212499 protein sequence Red=Cloning site Green=Tags(s)  MAKVFSFILVTTALTMGREISALEDCAQEQMRLRAQVRLLETRVKQQQVKIKQLLQENEVQFLDKGDENT VIDLGSKRQYADCSEIFNDGYKLSGFYKIKPLQSPAEFVYCDMSDGGGWTVIQRRSDGSENFNRGWKDY ENGFGNFVQKHGEYWLGNKNLHFLTQEDYTLKIDLADFEKNSRYAQYKNFKVGDENKFYELNIGEYSGT AGDSLGNFHPVQWWASHQRMKFSTWDRDHDNYEGNCAEEDQSGWWFNRCHSANLNGVYVYSGPYTAKTD NGIVWYTWHGWWYSLKSVVMKIRPNDFIPNVI  TRTRPLEQKLISEEDLAANDILDYKDDDDKV
Tag:	C-Myc/DDK
Purity:	> 80% as determined by SDS-PAGE and Coomassie blue staining
Concentration:	>0.05 µg/µL as determined by microplate BCA method
Labeling Method:	Labeled with [U- <sup>13</sup> C <sub>6</sub> , <sup>15</sup> N <sub>4</sub> ]-L-Arginine and [U- <sup>13</sup> C <sub>6</sub> , <sup>15</sup> N <sub>2</sub> ]-L-Lysine
Buffer:	25 mM Tris-HCl, 100 mM glycine, pH 7.3
Storage:	Store at -80°C. Avoid repeated freeze-thaw cycles.
Stability:	Stable for 3 months from receipt of products under proper storage and handling conditions.
RefSeq:	<u><a href="#">NP_004458</a></u>
RefSeq Size:	1285
RefSeq ORF:	936
Synonyms:	HFREP1; HP-041; HPS; LFIRE-1; LFIRE1
Locus ID:	2267



[View online »](#)

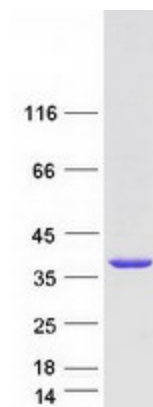
UniProt ID: [Q08830](#)

Cytogenetics: 8p22

**Summary:** Fibrinogen-like 1 is a member of the fibrinogen family. This protein is homologous to the carboxy terminus of the fibrinogen beta- and gamma- subunits which contains the four conserved cysteines of fibrinogens and fibrinogen related proteins. However, this protein lacks the platelet-binding site, cross-linking region and a thrombin-sensitive site which are necessary for fibrin clot formation. This protein may play a role in the development of hepatocellular carcinomas. Four alternatively spliced transcript variants encoding the same protein exist for this gene. [provided by RefSeq, Jul 2008]

**Protein Families:** Druggable Genome, Secreted Protein

### Product images:



Coomassie blue staining of purified FGL1 protein (Cat# [TP312499]). The protein was produced from HEK293T cells transfected with FGL1 cDNA clone (Cat# [RC212499]) using MegaTran 2.0 (Cat# [TT210002]).