

Product datasheet for PH312495

SFTPA2 (NM_001098668) Human Mass Spec Standard

Product data:

Product Type:	Mass Spec Standards
Description:	SFTPA2 MS Standard C13 and N15-labeled recombinant protein (NP_001092138)
Species:	Human
Expression Host:	HEK293
Expression cDNA Clone or AA Sequence:	RC212495
Predicted MW:	26 kDa
Protein Sequence:	>RC212495 representing NM_001098668 Red=Cloning site Green=Tags(s) MWLCPLALTLILMAASGAACEVKDVCVGSPIPGTPGSHGLPGRDGRDGVKGDGPPGPMGPPGETPCPP GNNGLPGAPGVGERGEKGEAGERGPPGLPAHLDEELQATLHDFRQILQTRGALSLQGSIMTVGEKVFS SNGQSITFDAIQEACARAGGRIAVPRNPEENEIASFVKKYNTYAYVGLTEGSPSGDFRYSYGTPVNYTN WYRGEPAGRGKEQCVEMYTDGQWNRNCLYSRLTICEF TRTRPLEQKLI SEEDLAANDILDYKDDDDKV
Tag:	C-Myc/DDK
Purity:	> 80% as determined by SDS-PAGE and Coomassie blue staining
Concentration:	>0.05 µg/µL as determined by microplate BCA method
Labeling Method:	Labeled with [U- 13C6, 15N4]-L-Arginine and [U- 13C6, 15N2]-L-Lysine
Buffer:	25 mM Tris-HCl, 100 mM glycine, pH 7.3
Storage:	Store at -80°C. Avoid repeated freeze-thaw cycles.
Stability:	Stable for 3 months from receipt of products under proper storage and handling conditions.
RefSeq:	NP_001092138
RefSeq Size:	2189
RefSeq ORF:	744
Synonyms:	COLEC5; PSAP; PSP-A; PSPA; SFTP1; SFTPA2B; SP-2A; SP-A; SPA2; SPAII
Locus ID:	729238
UniProt ID:	Q8IWL1

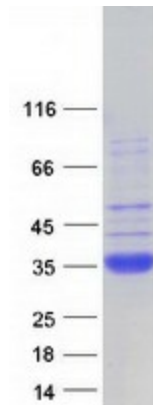


[View online »](#)

Cytogenetics: 10q22.3

Summary: This gene is one of several genes encoding pulmonary-surfactant associated proteins (SFTPA) located on chromosome 10. Mutations in this gene and a highly similar gene located nearby, which affect the highly conserved carbohydrate recognition domain, are associated with idiopathic pulmonary fibrosis. The current version of the assembly displays only a single centromeric SFTPA gene pair rather than the two gene pairs shown in the previous assembly which were thought to have resulted from a duplication. [provided by RefSeq, Sep 2009]

Product images:



Coomassie blue staining of purified SFTPA2 protein (Cat# [TP312495]). The protein was produced from HEK293T cells transfected with SFTPA2 cDNA clone (Cat# [RC212495]) using MegaTran 2.0 (Cat# [TT210002]).