

## Product datasheet for PH312481

### IKBKE (NM\_014002) Human Mass Spec Standard

#### Product data:

Product Type:	Mass Spec Standards
Description:	IKBKE MS Standard C13 and N15-labeled recombinant protein (NP_054721)
Species:	Human
Expression Host:	HEK293
Expression cDNA Clone or AA Sequence:	RC212481
Predicted MW:	80.3 kDa
Protein Sequence:	>RC212481 representing NM_014002 Red=Cloning site Green=Tags(s)

MQSTANYLWHTDDLQGGATASVYKARNKSGELVAVKVFNTTSLRPREVQVREFEVLRLNHQNIIVKL  
FAVEETGGSRQKVLVMEYCSSGSLLSVLESPENAFGLPEDEFLVVLRCVVAGMNLRENGIVHRDIKPGN  
IMRLVGEEGQSIYKLTDFGAARELDDDEKFSVSYGTEEYLHPDMYERAVLRKPKQKAFGVTVDLWSIGVT  
LYHAATGSLPFIPFGGPRRKEIMYRITTEKPAGAIAGAQRRENGPLEWSYTLPIITCQLSLGLQSQLVPI  
LANILEVEQAKCWGFDQFFAETSILQRVVHVFSLSQAVLHHIYIHAHNTIAIFQEAVHKQTSVAPRHQ  
EYLFEGHLCVLEPSVSAQHIAHTTASSPLTLFSTAIPKGLAFRDPALDVPKFPKVDLQADYNTAKGVLG  
AGYQALRLARALLDQELMFRGLHWVMEVLQATCRRTLEVARTSLLYLSSSLGTERFSSVAGTPEIQELK  
AAAEALRSRLRTLAEVLSRCSQNI TETQESLSSLNREL VKSRDQVHEDRSIQQIQCCLDKMNFIYKQFKKS  
RMRPGLGYNEEQIHKLDKVNFSHLDKRLLQVFQEECVQKYQASLVTHGKMRVHVHETRNHLRLVGCSVAA  
CNTEAQGVQESLSKLEELSHQLLQDRAKGAQASPPPIAPYPSPTRKDLLLHMQLCEGMKLLASDLLDN  
NRIIERLNRVPAPPDV

TRTRPLEQKLISEEDLAANDILDYKDDDDKV

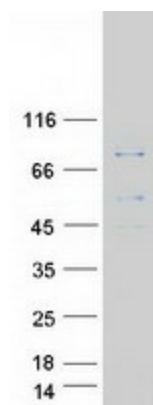
Tag:	C-Myc/DDK
Purity:	> 80% as determined by SDS-PAGE and Coomassie blue staining
Concentration:	>0.05 µg/µL as determined by microplate BCA method
Labeling Method:	Labeled with [U- <sup>13</sup> C <sub>6</sub> , <sup>15</sup> N <sub>4</sub> ]-L-Arginine and [U- <sup>13</sup> C <sub>6</sub> , <sup>15</sup> N <sub>2</sub> ]-L-Lysine
Buffer:	25 mM Tris-HCl, 100 mM glycine, pH 7.3
Storage:	Store at -80°C. Avoid repeated freeze-thaw cycles.
Stability:	Stable for 3 months from receipt of products under proper storage and handling conditions.
RefSeq:	<a href="#">NP_054721</a>



[View online »](#)

RefSeq Size:	3263
RefSeq ORF:	2148
Synonyms:	IKK-E; IKK-i; IKKE; IKKI
Locus ID:	9641
UniProt ID:	<a href="#">Q14164</a>
Cytogenetics:	1q32.1
Summary:	IKBKE is a noncanonical I-kappa-B (see MIM 164008) kinase (IKK) that is essential for regulating antiviral signaling pathways. IKBKE has also been identified as a breast cancer (MIM 114480) oncogene and is amplified and overexpressed in over 30% of breast carcinomas and breast cancer cell lines (Hutti et al., 2009 [PubMed 19481526]).[supplied by OMIM, Oct 2009]
Protein Families:	Druggable Genome, Protein Kinase
Protein Pathways:	Cytosolic DNA-sensing pathway, RIG-I-like receptor signaling pathway, Toll-like receptor signaling pathway

### Product images:



Coomassie blue staining of purified IKBKE protein (Cat# [TP312481]). The protein was produced from HEK293T cells transfected with IKBKE cDNA clone (Cat# [RC212481]) using MegaTran 2.0 (Cat# [TT210002]).