

## Product datasheet for PH312475

### Amino terminal enhancer of split (AES) (NM\_001130) Human Mass Spec Standard

#### Product data:

Product Type:	Mass Spec Standards
Description:	AES MS Standard C13 and N15-labeled recombinant protein (NP_001121)
Species:	Human
Expression Host:	HEK293
Expression cDNA Clone or AA Sequence:	RC212475
Predicted MW:	21.8 kDa
Protein Sequence:	>RC212475 representing NM_001130 Red=Cloning site Green=Tags(s)  MMFPQSRHSGSSHLPPQLKFTTSDSCDRIKDEFQLLQAQYHSLKLECDKLASEKSEMQRHYVMYEMSYG LNIEMHKQAEIVKRLNGICAQVLPYLSQEHQQQVLGAIERAKQVTAPELNSIIRQQQAHLSQLQALAL PLTPLPVGLQPPSLPAVSAGTGLLSLSALGSAHLKEDKNGHDGDTHQEDDGEKSD  TRTRPLEQKLISEEDLAANDILDYKDDDDKV
Tag:	C-Myc/DDK
Purity:	> 80% as determined by SDS-PAGE and Coomassie blue staining
Concentration:	>0.05 µg/µL as determined by microplate BCA method
Labeling Method:	Labeled with [U- <sup>13</sup> C <sub>6</sub> , <sup>15</sup> N <sub>4</sub> ]-L-Arginine and [U- <sup>13</sup> C <sub>6</sub> , <sup>15</sup> N <sub>2</sub> ]-L-Lysine
Buffer:	25 mM Tris-HCl, 100 mM glycine, pH 7.3
Storage:	Store at -80°C. Avoid repeated freeze-thaw cycles.
Stability:	Stable for 3 months from receipt of products under proper storage and handling conditions.
RefSeq:	<u>NP_001121</u>
RefSeq Size:	1687
RefSeq ORF:	591
Synonyms:	AES; AES-1; AES-2; ESP1; GRG; Grg-5; GRG5
Locus ID:	166
UniProt ID:	<u>Q08117</u> , <u>Q8WY48</u>



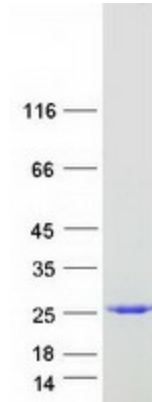
[View online »](#)

**Cytogenetics:** 19p13.3

**Summary:** The protein encoded by this gene is similar in sequence to the amino terminus of Drosophila enhancer of split groucho, a protein involved in neurogenesis during embryonic development. The encoded protein, which belongs to the groucho/TLE family of proteins, can function as a homooligomer or as a heterooligimer with other family members to dominantly repress the expression of other family member genes. Three transcript variants encoding different isoforms have been found for this gene. [provided by RefSeq, Jul 2008]

**Protein Families:** Druggable Genome, Transcription Factors

**Product images:**



Coomassie blue staining of purified TLE5 protein (Cat# [TP312475]). The protein was produced from HEK293T cells transfected with TLE5 cDNA clone (Cat# [RC212475]) using MegaTran 2.0 (Cat# [TT210002]).