

## Product datasheet for PH312468

### WDSUB1 (NM\_152528) Human Mass Spec Standard

#### Product data:

Product Type:	Mass Spec Standards
Description:	WDSUB1 MS Standard C13 and N15-labeled recombinant protein (NP_689741)
Species:	Human
Expression Host:	HEK293
Expression cDNA Clone or AA Sequence:	RC212468
Predicted MW:	52.7 kDa
Protein Sequence:	>RC212468 representing NM_152528 Red=Cloning site Green=Tags(s)

MVKLIHTLADHGDDVNCCAFSFSLLATCSLDKTIIRLYSLRDFTELPHSPLKFHTYAVHCCCFSPSGHILA  
SCSTDGTTVLWNTENGQMLAVMEQPSGSPVRVCQFSPDSTCLASGAADGTVVLWNAQSYKLYRCGSVKDG  
SLAACAFSPNGSFFVTGSSCGDLTVWDDKMRCLHSEKAHDLGITCCDFSSQPVSDGEQGLQFFRLASCGQ  
DCQVKIWIIVSFTHILGFELKYKSTLSGHCAPVLACAFSHDGQMLVSGSVDKSVIVYDTNTENILHTLTQH  
TRYVTTCAFAPNTLLLATGSMKTVNIWQFDLETLCQARRTEHQLKQFTEDWSEEDVSTWLCQAQLKDLV  
GIFKMNNIDGKELLNLTKESLADDLKIESLGLRSKVLKIEELRTKVKSLSSGIPDEFICPITRELMKDP  
VIASDGYSEKEAMENWISKKKRTSPMTNLVLPASVLTNPRTLKMAINRWLETHQK

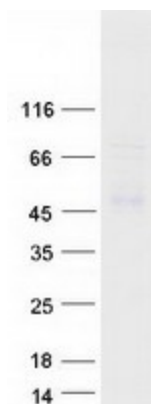
TRTRPLEQKLISEEDLAANDILDYKDDDDKV

Tag:	C-Myc/DDK
Purity:	> 80% as determined by SDS-PAGE and Coomassie blue staining
Concentration:	>0.05 µg/µL as determined by microplate BCA method
Labeling Method:	Labeled with [U- <sup>13</sup> C <sub>6</sub> , <sup>15</sup> N <sub>4</sub> ]-L-Arginine and [U- <sup>13</sup> C <sub>6</sub> , <sup>15</sup> N <sub>2</sub> ]-L-Lysine
Buffer:	25 mM Tris-HCl, 100 mM glycine, pH 7.3
Storage:	Store at -80°C. Avoid repeated freeze-thaw cycles.
Stability:	Stable for 3 months from receipt of products under proper storage and handling conditions.
RefSeq:	<a href="#">NP_689741</a>
RefSeq Size:	1811
RefSeq ORF:	1428
Synonyms:	UBOX6; WDSAM1



[View online »](#)

Locus ID: 151525  
UniProt ID: [Q8N9V3](#), [D3DPA6](#)  
Cytogenetics: 2q24.2  
Protein Families: Druggable Genome

**Product images:**

Coomassie blue staining of purified WDSUB1 protein (Cat# [TP312468]). The protein was produced from HEK293T cells transfected with WDSUB1 cDNA clone (Cat# [RC212468]) using MegaTran 2.0 (Cat# [TT210002]).