

## Product datasheet for PH312425

### AMHR2 (NM\_020547) Human Mass Spec Standard

#### Product data:

Product Type:	Mass Spec Standards
Description:	AMHR2 MS Standard C13 and N15-labeled recombinant protein (NP_065434)
Species:	Human
Expression Host:	HEK293
Expression cDNA Clone or AA Sequence:	RC212425
Predicted MW:	62.6 kDa
Protein Sequence:	>RC212425 representing NM_020547 Red=Cloning site Green=Tags(s)

MLGSLGLWALLPTAVEAPPNRRTCVFFEAPGVRGSKTLGELLDGTGTELPRAIRCLYSRCCFGIWNLTQD  
RAQVEMQGCRRSDPEPGCESLHCDPSPRAHPSPGSTLFTCSGTFDFCNANYSHLPPPGSPGTPGSQGPQAA  
PGESIWMALVLLGLFLLLLLLLLSIILALLQRKNYRVRGEPVPEPRPDSGRDWSVELQELPELFCFSQQVI  
REGGHAVVWAGQLQGKLVAIKAFPPRSVAQFQAERALYELPGLQHDHIVRFITASRGGPGRLLSGPLLVL  
ELHPKGSGLCHYLQYTSDWGSSLRMALSLAQGLAFLHEERWQNGQNKPGIAHRDLSSQNVLIREDGSCAI  
GDLGLALVLPGLTQPPAWTPTQPQGPAAIMEAGTQRYMAPELLDKTLDLQDWGMALRRADIYSLALLLWE  
ILSRCPDLRPDSSPPPFQLAYEAEAGNTPTSDDELWALVQERRRYPYIPSTWRCFATDPDGLRELLEDWCW  
ADPEARLTAECVQQLAALAHQPESHPPESCPRGCPPLCPEDCTSIPAPTILPCRPQRSACHFSVQQGP  
CSRNPQACTLSPV

TRTRPLEQKLI SEEDLAANDILDYKDDDDKV

Tag:	C-Myc/DDK
Purity:	> 80% as determined by SDS-PAGE and Coomassie blue staining
Concentration:	50 ug/ml as determined by BCA
Labeling Method:	Labeled with [U- 13C6, 15N4]-L-Arginine and [U- 13C6, 15N2]-L-Lysine
Buffer:	100 mM glycine, 25 mM Tris-HCl, pH 7.3. Store at -80°C. Avoid repeated freeze-thaw cycles. Stable for 3 months from receipt of products under proper storage and handling conditions.
RefSeq:	<u>NP_065434</u>
RefSeq Size:	1855
RefSeq ORF:	1722
Synonyms:	AMHR; MISR2; MISRII; MRII



[View online »](#)

Locus ID: 269

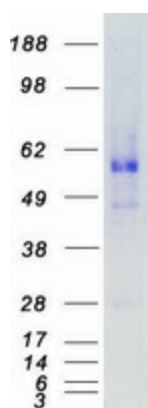
Cytogenetics: 12q13.13

**Summary:** This gene encodes the receptor for the anti-Mullerian hormone (AMH) which, in addition to testosterone, results in male sex differentiation. AMH and testosterone are produced in the testes by different cells and have different effects. Testosterone promotes the development of male genitalia while the binding of AMH to the encoded receptor prevents the development of the mullerian ducts into uterus and Fallopian tubes. Mutations in this gene are associated with persistent Mullerian duct syndrome type II. Alternatively spliced transcript variants encoding different isoforms have been identified. [provided by RefSeq, Sep 2009]

**Protein Families:** Druggable Genome, Protein Kinase, Transmembrane

**Protein Pathways:** Cytokine-cytokine receptor interaction, TGF-beta signaling pathway

### Product images:



Coomassie blue staining of purified AMHR2 protein (Cat# [TP312425]). The protein was produced from HEK293T cells transfected with AMHR2 cDNA clone (Cat# [RC212425]) using MegaTran 2.0 (Cat# [TT210002]).