

Product datasheet for PH312420

EEF2 (NM_001961) Human Mass Spec Standard

Product data:

Product Type:	Mass Spec Standards
Description:	EEF2 MS Standard C13 and N15-labeled recombinant protein (NP_001952)
Species:	Human
Expression Host:	HEK293
Expression cDNA Clone or AA Sequence:	RC212420
Predicted MW:	95.2 kDa
Protein Sequence:	>RC212420 representing NM_001961 Red=Cloning site Green=Tags(s)

MVNFTVDQIRAIMDKKANIRNMSVIAHVDHGKSTLTDSLVCAGIIASARAGETRFTDTRKDEQERCITIKSTAIISLFYELSENDLNFQKQSKDGAGFLINLIDSPGHVDFSSEVTAALRVTDGALVVVDCVSGVCVQTE TVLRQAI AERIKPVLMMNKMDRALLELQLEPEELYQTFQRIVENVNVIIISTYGEESGPMGNIMIDPVLG TVVFGSGLHGWAFTLKQFAEMYVAKFAAKGEGQLGPAERAKKVEDMMKKLWGDYFDPANGKFSKATSPEGKKLPRTFCQLILDPIFKVFDAIMNFKKEETAKLIEKLDIKLDESDKDKGKPLLKAVMRRWLPAGDAL LQMITIHLPSPVTAQKYRCCELLYEGPPDEAAMGIKSCDPKGPLMMYISKMVPTSDKGRFYAFGRVFSGL VSTGLKVRIMGPNYTPGKKEDLYLKPIQRTILMMGRYVEPIEDVPCGNI VGLVGVDQFLVKTGTITTFEH AHNMRVMKFSVSPVVRVAEAKNPADLPKLVEGLKRLAKSDPMVQCIIEESGEHIIAGAGELHLEICLKD LEEDHACIPIKKSDPVVSYRET VSESNVLCLSKSPNKHNLRYMKARPPDGLAEDIDKGEVSARQELKQ RARYLAEKYEWDAEARKIWCFGPDGTGNILTDITKGQYLNEIKDSVVAGFQWATKEGALCEENMRGV RFDVHDVTLHADAIHRGGGQIIP TARRCLYASVLTAQPRLMEPIYLVEIQCEQVVGGIYVGLNRKRGHV FEESQVAGTPMFVVKAYLPVNESFGFTADLRSNTGGQAFQPCVFDHWQILPGDPFDNSSRPSQVVAETRK RKGLKEGIPALDNFLDKL

TRTRPLEQKLI SEEDLAANDILDYKDDDDKV

Tag:	C-Myc/DDK
Purity:	> 80% as determined by SDS-PAGE and Coomassie blue staining
Concentration:	>0.05 µg/µL as determined by microplate BCA method
Labeling Method:	Labeled with [U- ¹³ C ₆ , ¹⁵ N ₄]-L-Arginine and [U- ¹³ C ₆ , ¹⁵ N ₂]-L-Lysine
Buffer:	25 mM Tris-HCl, 100 mM glycine, pH 7.3
Storage:	Store at -80°C. Avoid repeated freeze-thaw cycles.
Stability:	Stable for 3 months from receipt of products under proper storage and handling conditions.



[View online »](#)

RefSeq: [NP_001952](#)

RefSeq Size: 3148

RefSeq ORF: 2574

Synonyms: EEF-2; EF-2; EF2; SCA26

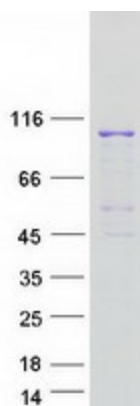
Locus ID: 1938

UniProt ID: [P13639](#), [A0A384N6H1](#)

Cytogenetics: 19p13.3

Summary: This gene encodes a member of the GTP-binding translation elongation factor family. This protein is an essential factor for protein synthesis. It promotes the GTP-dependent translocation of the nascent protein chain from the A-site to the P-site of the ribosome. This protein is completely inactivated by EF-2 kinase phosphorylation. [provided by RefSeq, Jul 2008]

Product images:



Coomassie blue staining of purified EEF2 protein (Cat# [TP312420]). The protein was produced from HEK293T cells transfected with EEF2 cDNA clone (Cat# [RC212420]) using MegaTran 2.0 (Cat# [TT210002]).