

Product datasheet for PH312414

Myosin (MYL5) (NM_002477) Human Mass Spec Standard

Product data:

Product Type:	Mass Spec Standards
Description:	MYL5 MS Standard C13 and N15-labeled recombinant protein (NP_002468)
Species:	Human
Expression Host:	HEK293
Expression cDNA Clone or AA Sequence:	RC212414
Predicted MW:	19.4 kDa
Protein Sequence:	>RC212414 representing NM_002477 Red=Cloning site Green=Tags(s) MASRKTKKKEGGALRAQRASSNVFSNFEQTQIQEFKEAFTLMDQNRDGFIDKEDLKDTYASLGKTNVKDD ELDAMLKEASGPINFTMFLNLFGEKLSGTDAEETILNAFKMLDPDGKGINKEYIKRLLMSQADKMTAAE VDQMFQFASIDVAGNLDYKALSIVITHGEEKEE TRTRPLEQKLI SEEDLAANDILDYKDDDDKV
Tag:	C-Myc/DDK
Purity:	> 80% as determined by SDS-PAGE and Coomassie blue staining
Concentration:	>0.05 µg/µL as determined by microplate BCA method
Labeling Method:	Labeled with [U- ¹³ C ₆ , ¹⁵ N ₄]-L-Arginine and [U- ¹³ C ₆ , ¹⁵ N ₂]-L-Lysine
Buffer:	25 mM Tris-HCl, 100 mM glycine, pH 7.3
Storage:	Store at -80°C. Avoid repeated freeze-thaw cycles.
Stability:	Stable for 3 months from receipt of products under proper storage and handling conditions.
RefSeq:	NP_002468
RefSeq Size:	661
RefSeq ORF:	519
Synonyms:	MYLC2
Locus ID:	4636
UniProt ID:	Q02045



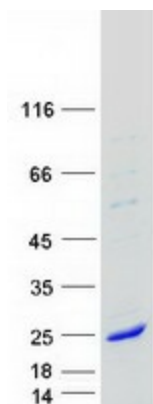
[View online »](#)

Cytogenetics: 4p16.3

Summary: This gene encodes one of the myosin light chains, a component of the hexameric ATPase cellular motor protein myosin. Myosin is composed of two heavy chains, two nonphosphorylatable alkali light chains, and two phosphorylatable regulatory light chains. This gene product, one of the regulatory light chains, is expressed in fetal muscle and in adult retina, cerebellum, and basal ganglia. [provided by RefSeq, Jul 2008]

Protein Pathways: Focal adhesion, Leukocyte transendothelial migration, Regulation of actin cytoskeleton, Tight junction

Product images:



Coomassie blue staining of purified MYL5 protein (Cat# [TP312414]). The protein was produced from HEK293T cells transfected with MYL5 cDNA clone (Cat# [RC212414]) using MegaTran 2.0 (Cat# [TT210002]).