

Product datasheet for PH312410

PDE4D (NM_006203) Human Mass Spec Standard

Product data:

| | |
|---------------------------------------|---|
| Product Type: | Mass Spec Standards |
| Description: | PDE4D MS Standard C13 and N15-labeled recombinant protein (NP_006194) |
| Species: | Human |
| Expression Host: | HEK293 |
| Expression cDNA Clone or AA Sequence: | RC212410 |
| Predicted MW: | 76.3 kDa |
| Protein Sequence: | >RC212410 representing NM_006203 Red=Cloning site Green=Tags(s) |

MHVNNFPFRRHSWICFDVDNGTSAGRSPLDPMTSPGSLILQANFVHSQRRESFLYRSDSDYDLSPKSMS
RNSSIASDIHGDDLIVTFAQVLAASLRVTRNNFAALTNLQDRAPSKRSPMCNQPSINKATITEEAYQKLA
SETLEELDWCQDQLETQTRHSVSEMASNFKRMLNRELTHLSEMSRSGNQVSEFISNTFLDKQHEVEIP
SPTQKEKEKKRPMSSQISGVKMLMHSSSLTNSSIPRFGVKTEQEDVLAKELEDVKNWGLHVFRIAEISGN
RPLTVIMHTIFQERDLLKTFKIPVDLITLTYLMTLEDHYHADVAYHNNIHAADVQSTHVLSTPALEAVF
TDLEILAAIFASAIHDVDHPGVSNOFLINTNSELALMYNDSSVLENHHLAVGFKLLQEENCDFQNLTKK
QRQSLRKMVIDIVLATDMSKHMNLLADLKTVMETKKVTSQVLLLDNYSDRIQVLQNMVHCADLSNPTKP
LQLYRQWTDRIEIEFFRQGDREERERGMESPMCDKHNASVEKSQVGFIDYIVHPLWETWADLVHPDAQDI
LDTLEDNREWYQSTIPQSPSPAPDDPEEGRQGQTEKFQFELTLEEDGESDTEKDSGSQVEEDTSCSDSKT
LCTQDSESTEIPLDEQVEEEAVGEEESQPEACVIDDRSPDT

TRTRPLEQKLI SEEDLAANDILDYKDDDDKV

| | |
|------------------|--|
| Tag: | C-Myc/DDK |
| Purity: | > 80% as determined by SDS-PAGE and Coomassie blue staining |
| Concentration: | >0.05 µg/µL as determined by microplate BCA method |
| Labeling Method: | Labeled with [U- 13C6, 15N4]-L-Arginine and [U- 13C6, 15N2]-L-Lysine |
| Buffer: | 25 mM Tris-HCl, 100 mM glycine, pH 7.3 |
| Storage: | Store at -80°C. Avoid repeated freeze-thaw cycles. |
| Stability: | Stable for 3 months from receipt of products under proper storage and handling conditions. |
| RefSeq: | NP_006194 |
| RefSeq Size: | 5876 |



[View online »](#)

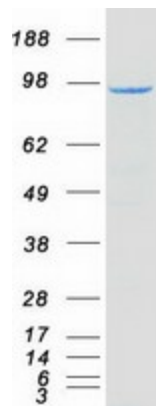
| | |
|---------------|--|
| RefSeq ORF: | 2016 |
| Synonyms: | ACRDYS2; DPDE3; HSPDE4D; PDE4DN2; PDE43; STRK1 |
| Locus ID: | 5144 |
| UniProt ID: | Q08499 |
| Cytogenetics: | 5q11.2-q12.1 |

Summary: This gene encodes one of four mammalian counterparts to the fruit fly 'dunce' gene. The encoded protein has 3',5'-cyclic-AMP phosphodiesterase activity and degrades cAMP, which acts as a signal transduction molecule in multiple cell types. This gene uses different promoters to generate multiple alternatively spliced transcript variants that encode functional proteins.[provided by RefSeq, Sep 2009]

Protein Families: Druggable Genome

Protein Pathways: Progesterone-mediated oocyte maturation, Purine metabolism

Product images:



Coomassie blue staining of purified PDE4D protein (Cat# [TP312410]). The protein was produced from HEK293T cells transfected with PDE4D cDNA clone (Cat# [RC212410]) using MegaTran 2.0 (Cat# [TT210002]).