

## Product datasheet for PH312405

### UBE2L6 (NM\_004223) Human Mass Spec Standard

#### Product data:

Product Type:	Mass Spec Standards
Description:	UBE2L6 MS Standard C13 and N15-labeled recombinant protein (NP_004214)
Species:	Human
Expression Host:	HEK293
Expression cDNA Clone or AA Sequence:	RC212405
Predicted MW:	17.6 kDa
Protein Sequence:	>RC212405 representing NM_004223 Red=Cloning site Green=Tags(s)  MMASMRVVKLEEDLQKKPPPYLRNLSSDDANVLVWHALLLPDQPPYHLKAFNLRISFPPEYPFKPPMIKF TTKIYHPNVDENGQICLPIISSENWKPCTKTCQVLEALNVLVNRPNIREPLRMDLADLLTQNPFLFRKNA EEFTLRFGVDRPS  TRTRPLEQKLISEEDLAANDILDYKDDDDKV
Tag:	C-Myc/DDK
Purity:	> 80% as determined by SDS-PAGE and Coomassie blue staining
Concentration:	>0.05 µg/µL as determined by microplate BCA method
Labeling Method:	Labeled with [U- 13C6, 15N4]-L-Arginine and [U- 13C6, 15N2]-L-Lysine
Buffer:	25 mM Tris-HCl, 100 mM glycine, pH 7.3
Storage:	Store at -80°C. Avoid repeated freeze-thaw cycles.
Stability:	Stable for 3 months from receipt of products under proper storage and handling conditions.
RefSeq:	<a href="#">NP_004214</a>
RefSeq Size:	1260
RefSeq ORF:	459
Synonyms:	RIG-B; UBCH8
Locus ID:	9246
UniProt ID:	<a href="#">O14933</a> , <a href="#">Q8N5D8</a>



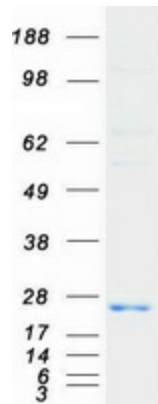
[View online »](#)

**Cytogenetics:** 11q12.1

**Summary:** The modification of proteins with ubiquitin is an important cellular mechanism for targeting abnormal or short-lived proteins for degradation. Ubiquitination involves at least three classes of enzymes: ubiquitin-activating enzymes (E1s), ubiquitin-conjugating enzymes (E2s) and ubiquitin-protein ligases (E3s). This gene encodes a member of the E2 ubiquitin-conjugating enzyme family. This enzyme is highly similar in primary structure to the enzyme encoded by the UBE2L3 gene. Two alternatively spliced transcript variants encoding distinct isoforms have been found for this gene. [provided by RefSeq, May 2011]

**Protein Pathways:** Parkinson's disease, Ubiquitin mediated proteolysis

**Product images:**



Coomassie blue staining of purified UBE2L6 protein (Cat# [TP312405]). The protein was produced from HEK293T cells transfected with UBE2L6 cDNA clone (Cat# [RC212405]) using MegaTran 2.0 (Cat# [TT210002]).