

Product datasheet for PH312400

WFDC10A (NM_080753) Human Mass Spec Standard

Product data:

Product Type:	Mass Spec Standards
Description:	WFDC10A MS Standard C13 and N15-labeled recombinant protein (NP_542791)
Species:	Human
Expression Host:	HEK293
Expression cDNA Clone or AA Sequence:	RC212400
Predicted MW:	8.9 kDa
Protein Sequence:	>RC212400 protein sequence Red=Cloning site Green=Tags(s) MAPQTL LPVLVLCVLLLLQAQGGYRDKKRMQKTQLSPEIKVCQQPKLYLCKHLCESHRDCQANNICSTY CGNVCMSSIL TRTRPLEQKLISEEDLAANDILDYKDDDDKV
Tag:	C-Myc/DDK
Purity:	> 80% as determined by SDS-PAGE and Coomassie blue staining
Concentration:	>0.05 µg/µL as determined by microplate BCA method
Labeling Method:	Labeled with [U- 13C6, 15N4]-L-Arginine and [U- 13C6, 15N2]-L-Lysine
Buffer:	25 mM Tris-HCl, 100 mM glycine, pH 7.3
Storage:	Store at -80°C. Avoid repeated freeze-thaw cycles.
Stability:	Stable for 3 months from receipt of products under proper storage and handling conditions.
RefSeq:	NP_542791
RefSeq Size:	482
RefSeq ORF:	237
Synonyms:	C20orf146; dj688G8.3; WAP10
Locus ID:	140832
UniProt ID:	Q9H1F0
Cytogenetics:	20q13.12



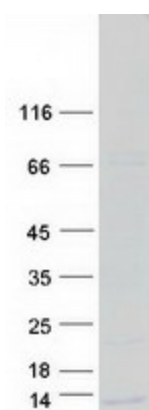
[View online »](#)

Summary:

This gene encodes a member of the WAP-type four-disulfide core (WFDC) domain family. The WFDC domain, or WAP signature motif, contains eight cysteines forming four disulfide bonds at the core of the protein, and functions as a protease inhibitor. Most WFDC gene members are localized to chromosome 20q12-q13 in two clusters: centromeric and telomeric. This gene belongs to the telomeric cluster. [provided by RefSeq, Jul 2008]

Protein Families:

Secreted Protein, Transmembrane

Product images:

Coomassie blue staining of purified WFDC10A protein (Cat# [TP312400]). The protein was produced from HEK293T cells transfected with WFDC10A cDNA clone (Cat# [RC212400]) using MegaTran 2.0 (Cat# [TT210002]).