

Product datasheet for PH312397

IL20 (NM_018724) Human Mass Spec Standard

Product data:

Product Type:	Mass Spec Standards
Description:	IL20 MS Standard C13 and N15-labeled recombinant protein (NP_061194)
Species:	Human
Expression Host:	HEK293
Expression cDNA Clone or AA Sequence:	RC212397
Predicted MW:	20.1 kDa
Protein Sequence:	>RC212397 protein sequence Red =Cloning site Green =Tags(s) MKASSLAFSLLSAAFYLLWTPSTGLKTLNLGSCVIATNLQEIRNGFSEIRGSVQAKDGNIDIRILRRTES LQDTKPANRCCLLRHLLRLYLDRVFKNYQTPDHYTLRKISSLANSTLTIKDLRLCHAHMTCHCGEEAMK KYSQILSHFEKLEPQAAVVKALGELDILLQWMEETE TR TRPLEQKLISEEDLAANDILDYKDDDDKV
Tag:	C-Myc/DDK
Purity:	> 80% as determined by SDS-PAGE and Coomassie blue staining
Concentration:	>0.05 µg/µL as determined by microplate BCA method
Labeling Method:	Labeled with [U- ¹³ C ₆ , ¹⁵ N ₄]-L-Arginine and [U- ¹³ C ₆ , ¹⁵ N ₂]-L-Lysine
Buffer:	25 mM Tris-HCl, 100 mM glycine, pH 7.3
Storage:	Store at -80°C. Avoid repeated freeze-thaw cycles.
Stability:	Stable for 3 months from receipt of products under proper storage and handling conditions.
RefSeq:	NP_061194
RefSeq Size:	1252
RefSeq ORF:	528
Synonyms:	IL-20; IL10D; ZCYTO10
Locus ID:	50604
UniProt ID:	Q9NYY1



[View online »](#)

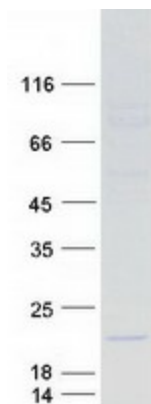
Cytogenetics: 1q32.1

Summary: The protein encoded by this gene is a cytokine structurally related to interleukin 10 (IL10). This cytokine has been shown to transduce its signal through signal transducer and activator of transcription 3 (STAT3) in keratinocytes. A specific receptor for this cytokine is found to be expressed in skin and upregulated dramatically in psoriatic skin, suggesting a role for this protein in epidermal function and psoriasis. [provided by RefSeq, Jul 2008]

Protein Families: Druggable Genome, Secreted Protein

Protein Pathways: Cytokine-cytokine receptor interaction, Jak-STAT signaling pathway

Product images:



Coomassie blue staining of purified IL20 protein (Cat# [TP312397]). The protein was produced from HEK293T cells transfected with IL20 cDNA clone (Cat# [RC212397]) using MegaTran 2.0 (Cat# [TT210002]).