

Product datasheet for PH312378

AMMECR1 (NM_015365) Human Mass Spec Standard

Product data:

Product Type:	Mass Spec Standards
Description:	AMMECR1 MS Standard C13 and N15-labeled recombinant protein (NP_056180)
Species:	Human
Expression Host:	HEK293
Expression cDNA Clone or AA Sequence:	RC212378
Predicted MW:	35.3 kDa
Protein Sequence:	>RC212378 representing NM_015365 Red=Cloning site Green=Tags(s)

MAAGCCGVKKQKLSSPPSGSGGGGASSSSHCSGESQCRAGELGLGGAGTRLNGLGGLTGGSGSGCTL
SPPQCGGGGGIALSPPPCGVTLLSTPAAATSSPSSSSAASSSPGSRKMVSAEMCCCFDVLVC
HLYGYQQPRTPRFTNEPYPLFVTWKIGRDKRLRGCIGTF SAMNLHSLREYTLTSALKDSRFPPMTRDEL
PRLFCSVSLLTNFEDVCDYLDWEVGVHGIRIEFINEKGSKRTATYLPVAVKEQGWQDHIQTIDSLLRKGGY
KAPITNEFRKTIKLTTRYRSEKMTLSYAEYLAHRQHHPFQNGIGHPLPPYNHYS

TRTRPLEQKLI SEEDLAANDILDYKDDDDKV

Tag:	C-Myc/DDK
Purity:	> 80% as determined by SDS-PAGE and Coomassie blue staining
Concentration:	>0.05 µg/µL as determined by microplate BCA method
Labeling Method:	Labeled with [U- ¹³ C ₆ , ¹⁵ N ₄]-L-Arginine and [U- ¹³ C ₆ , ¹⁵ N ₂]-L-Lysine
Buffer:	25 mM Tris-HCl, 100 mM glycine, pH 7.3
Storage:	Store at -80°C. Avoid repeated freeze-thaw cycles.
Stability:	Stable for 3 months from receipt of products under proper storage and handling conditions.
RefSeq:	NP_056180
RefSeq Size:	5431
RefSeq ORF:	999
Synonyms:	AMMERC1; MFHIEN
Locus ID:	9949



[View online »](#)

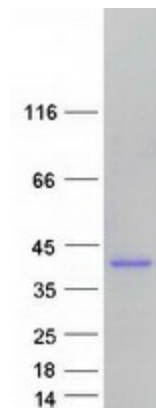
UniProt ID: [Q9Y4X0](#), [A0A0S2Z4X0](#)

Cytogenetics: Xq23

Summary: The exact function of this gene is not known, however, submicroscopic deletion of the X chromosome including this gene, COL4A5, and FACL4 genes, result in a contiguous gene deletion syndrome, the AMME complex (Alport syndrome, mental retardation, midface hypoplasia, and elliptocytosis). Alternatively spliced transcript variants encoding different isoforms have been found for this gene. [provided by RefSeq, Jan 2010]

Protein Families: Druggable Genome

Product images:



Coomassie blue staining of purified AMMECR1 protein (Cat# [TP312378]). The protein was produced from HEK293T cells transfected with AMMECR1 cDNA clone (Cat# [RC212378]) using MegaTran 2.0 (Cat# [TT210002]).