

Product datasheet for PH312370

TAS1R1 (NM_177540) Human Mass Spec Standard

Product data:

Product Type:	Mass Spec Standards
Description:	TAS1R1 MS Standard C13 and N15-labeled recombinant protein (NP_803884)
Species:	Human
Expression Host:	HEK293
Expression cDNA Clone or AA Sequence:	RC212370
Predicted MW:	65 kDa
Protein Sequence:	>RC212370 representing NM_177540 Red=Cloning site Green=Tags(s)

MLLCTARLVGLQLLISCCWAFACHSTESSPDFTLPGDYLLAGLFPLHSGCLQVRHRPEVTLCDRSCSFNE
HGYHLFQAMRLGVEEINNSTALLPNITLGYQLYDVCSDSANVYATLRVLSLPGQHHEIQGDLLHYSPTV
LAVIGPDSTNRAATTAALLSPFLVPMLEQIHKVHLLHKDVFVAFNDNRDPLSSYNIIAWDWNGPKWFTT
VLGSSTWSPVQLNINETKIQWHGKDNQVPKSVCSDDCLEGHQVRVTFHHCFCVPCGAGTFLNKSDLY
RCQPCGKEEWAPEGSQTCFPRVFLALREHTSWVLLAANTLLLLLLGTAGLFAWHLDPVVRSAAGRL
CFLMLGSLAAGSGSLYGFGEPTRPACLLRQALFALGFTIFLSCLTVRSFQLIIIFKFSTKVPTFYHAWV
QNHGAGLFVMISSAAQLLICLTWLVVWTPLPAREYQRFPHLVMLECTETNSLGFILAFLYNGLLSISAF
CSYLGKDLPENYNEAKCVTFSLLFNFVSWIAFFTTASVYDGKYLPAANMMAGLSSLSSGGYFLPKCYV
ILCRPDLNSTEHFQASIQDYTRRCGST

TRTRPLEQKLISEEDLAANDILDYKDDDDKV

Tag:	C-Myc/DDK
Purity:	> 80% as determined by SDS-PAGE and Coomassie blue staining
Concentration:	>0.05 µg/µL as determined by microplate BCA method
Labeling Method:	Labeled with [U- 13C6, 15N4]-L-Arginine and [U- 13C6, 15N2]-L-Lysine
Buffer:	25 mM Tris-HCl, 100 mM glycine, pH 7.3
Storage:	Store at -80°C. Avoid repeated freeze-thaw cycles.
Stability:	Stable for 3 months from receipt of products under proper storage and handling conditions.
RefSeq:	NP_803884
RefSeq Size:	1945
RefSeq ORF:	1761



[View online »](#)

Synonyms: GM148; GPR70; T1R1; TR1

Locus ID: 80835

UniProt ID: [Q7RTX1](#), [A8K7J9](#)

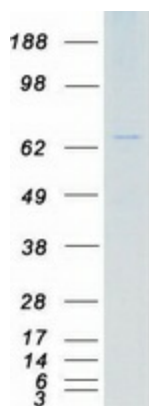
Cytogenetics: 1p36.31

Summary: The protein encoded by this gene is a G protein-coupled receptor and is a component of the heterodimeric amino acid taste receptor T1R1+3. The T1R1+3 receptor responds to L-amino acids but not to D-enantiomers or other compounds. Most amino acids that are perceived as sweet activate T1R1+3, and this activation is strictly dependent on an intact T1R1+3 heterodimer. Multiple transcript variants encoding different isoforms have been found for this gene. [provided by RefSeq, Jun 2010]

Protein Families: Druggable Genome, Transmembrane

Protein Pathways: Taste transduction

Product images:



Coomassie blue staining of purified TAS1R1 protein (Cat# [TP312370]). The protein was produced from HEK293T cells transfected with TAS1R1 cDNA clone (Cat# [RC212370]) using MegaTran 2.0 (Cat# [TT210002]).